



USER MANUAL CMA SERIES

INDEX

1. Contents	1
2. Introduccions and requirements	2
3. Description	3
4. Installation	14
5. Turn “ON” sequence	18
6. Calibration	19
7. Rotary Attachment installation	24
8. Software installation	28
9. Loading the Drivers	33
10. Testing	37
11. Engraving pictures	41
12. Maintenance	44
13. Troubleshooting	51
14. FAQ’s	55



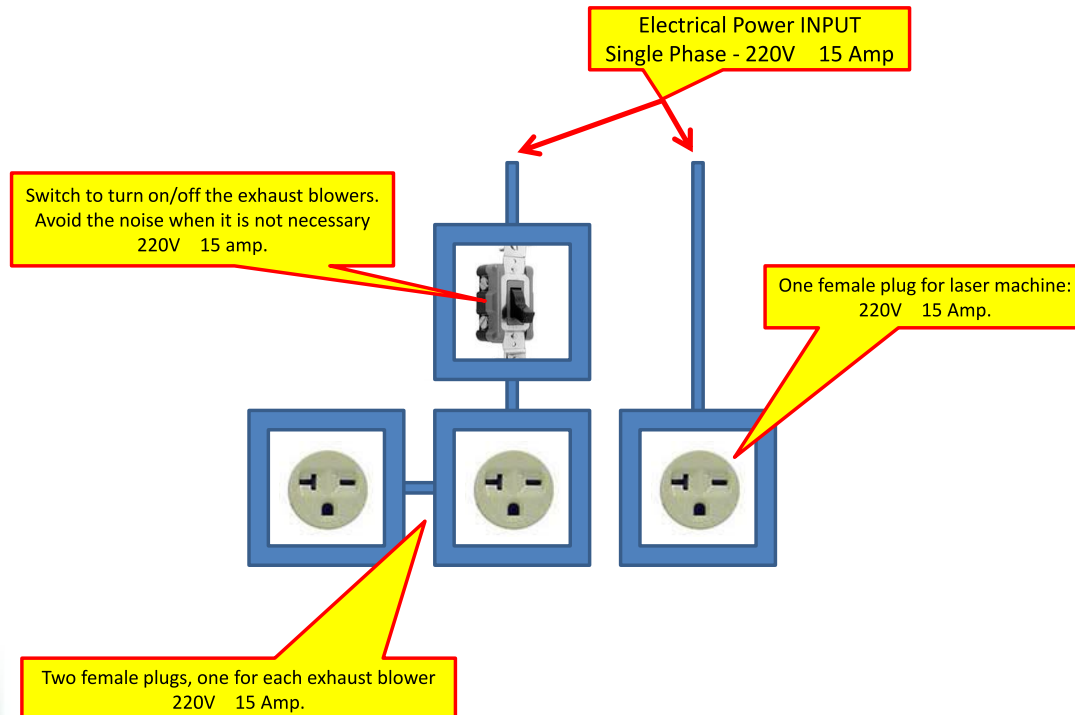
USER MANUAL

Thank you for purchasing a state of the art CamFive laser machine. We are confident that you will be satisfied with our product. The following information will guide you to a fast a safe installation of your new Laser cutter and engraving machine. Some requirements need to be met before starting. An electrical installation needs to be made to connect the equipment depending on the model.

REQUIREMENTS:



SCHEMATIC OF ELECTRICAL CONNECTIONS (SUGGESTED) CFL-CMA1610T



This particular diagram is referred to the CMA SERIES which comes with two Blowers for any other model install one outlet for the blower and one for the Laser. The following brief description will help you to get familiar in how the equipment works.

DESCRIPTION

Our Lasers are equipped with the peripherals required for optimum operation. The final assembly is made in the USA by qualified personnel. A voltage regulator is integrated inside the machine to provide power stability.



This particular model is the SVC-3000 VA. We also have SVC-2000 VA and SVC-5000 VA depending on the model. This units are designed to maintain a stable and continuous 220 V ac output to keep the electronics running at optimum condition. It protects from power surges, low and high input voltage.

Product Performance

Single phase series

Input voltage	150V-250V	Ambient temperature	-10°C-+40°C
Output voltage	220V or 110V	Relative Humidity	<95%
Stabilization Accuracy	220V±3% or 110V±6%	Temperature rise	<60°C
Frequency	50Hz/60Hz	Wave form distortion	No Additional Waveform Distortion
Debug time	<1s (With the input voltage variation of 10%)	Overload Power Factor	0.8
Efficiency	>90%	Dielectric strength	1500V/min
Over voltage	246V±4V	Insulation resistance	>5MΩ

Three-phases series

Input voltage	150V-250V or 260V-430V	Ambient temperature	-10°C-+40°C
Output voltage	220V or 380V	Relative Humidity	<95%
Stabilization Accuracy	220V±3% or 380V±6%	Temperature rise	<60°C
Frequency	50Hz/60Hz	Wave form distortion	No Additional Waveform Distortion
Debug time	<1s (With the input voltage variation of 10%)	Overload Power Factor	0.8
Efficiency	>90%	Dielectric strength	1500V/min
Over voltage	246V±4V	Insulation resistance	>5MΩ

The air assist compressor will be installed outside the laser cabinet. A power strip attached to the cabinet is also provided to power the air compressor and the water chiller.



The external water chiller is shown below.



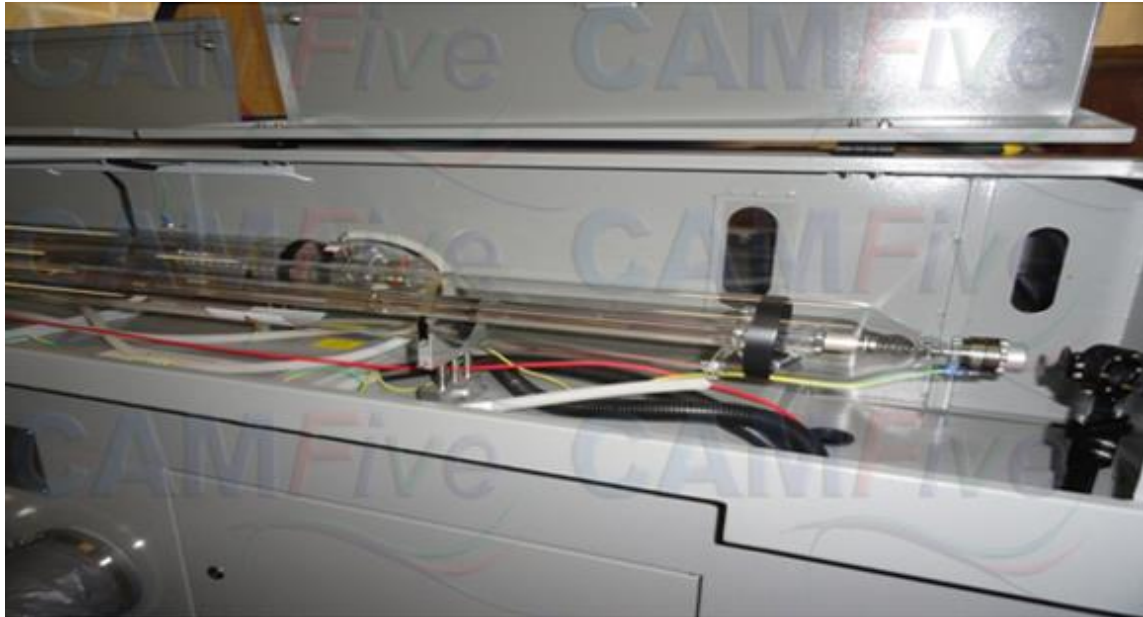
The Chiller comes with two hoses that will be connected to the main assembly for continuous water circulation to keep the laser tube at optimum working temperature. Regularly about 18 °C to 25 °C depending on the environment temperature. Distilled water will be required (1.5 gallons).

2.3 Technical Specifications

Model		PH-LW10-BLP/10
cooling capacity	W	1000
	Btu/h	3412
	Kcal/h	860
Power supply		1PH-220V/ 60HZ
refrigerant		R22
compressor power HP		3/8
Rated Air Discharge m ³ /h		820
Fan Power W		36
Water tank L		3.5
Inlet/Outlet		Inner Thread DN15(1/2")
Drain		Inner Thread DN15(1/2")
pump	Power of pump W	91
	Lift Range m	10~4
	Rated Flow L/min	8~30
Rated Working Current A		3.2
Flow work point L/min		2
operation range	Ambient Temp	≤35℃
	Chilled Water Temp	5℃~25℃
Net weight Kg		39
L×W×H (mm)		330×450×600

NOTE: Water temp. stability is $\pm 0.5^{\circ}\text{C}$, the max. ambient is 40°C ; Water temp. setting range from 5 to 25°C . The filter is made of polypropylene and the filtration hole is $5\mu\text{m}$ in diameter. Nominal working condition: Above technical parameter is based on ambient temp. 30°C , output water temp. 25°C . All the specifications are subjected to revise without further Notice.

The CO₂ laser tube is the heart of the system and it is shown in the picture below.



The laser tube has an Anode (+) and a Cathode (-). It also has the water input and output ports. The red wire shows the Anode side and Green/yellow the Cathode side. This information will help identify the right position of the tube during installation.

A 750 Watts power supply will be producing the required power for the tube during normal operation. This unit is installed in compartment in the back of the main assembly. The input power is 220 Vac +/- 10% with an output power of 40 Kv DC 30 MA.



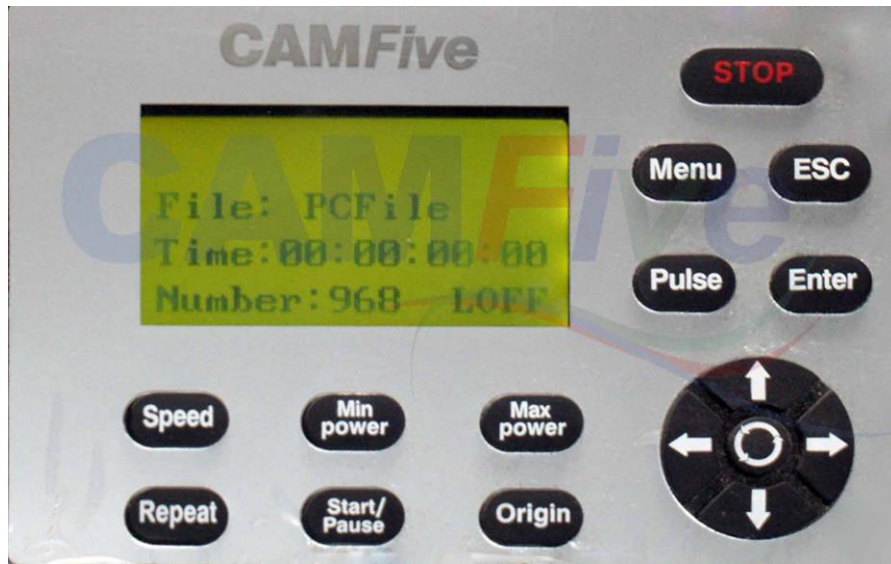
The picture below shows the electronics inside the main cabinet.



An industrial blower is also included in the system to extract fumes and smoke from the work area.



CONTROL PANEL



The operation panel includes the display area and keypad. Note that the backlight will go out when 60 seconds has passed without any key. Press any key to turn it on again. The keypad contains 16 keys. Refer to the description below for the function of each key.

1. E-stop is mainly designed for emergency when required. The current work stops, and the laser head first moves to the machine point origin and then back to the engraving origin set by the user. Pressing the E-stop button during operation may greatly impact the device, so it is forbidden to use unless it is an emergency. To terminate the present work, press "Start/Pause" to pause first and then "ESC". The system stops the current work and returns to the wait mode. After releasing the key, the system will be initialized.
2. Press "Menu" to access the menu interface. In the File List interface, press it to access the File Copy interface.
3. Pulse key is used to send a laser pulse during calibration.
4. Press "ESC" to quit operation or return to the previous menu.
5. Press "Enter" to confirm an operation or to enter the next menu.
6. Press "Speed" to enter the engraving speed setup interface. The speed can be set between 0% and 100%. The key is only available when the system is in standby mode. The 100% speed corresponds to the terminal speed in the machine parameters.
7. "Min Power" to access the minimum power setup interface. The power can be set between 0% and 100%. The key is only available when the system is in standby mode.
8. "Max Power" to access the maximum power setup interface. The power can be set between 0% and 100%. The key is only available when the system is in standby mode.
9. Pressing "Repeat" enables the system to repeat work or perform engraving & cutting processing of a specified file. The engraving data outputted from a PC are saved in the built-in memory of the engraving machine. The system is able to finish engraving without a computer, i.e., to work offline. To engrave one graph repeatedly, use the "Repeat" key. The key is available only when the system is in standby mode and the engraving data have been saved in the machine.
10. "Start/Pause" enables the system to start engraving and cutting with the specified file. When the system is working, press the key to have the system pause and press it again to resume the work. The key is available when the system is in working, pause and standby mode.
11. Origin key is designed to define (change) the engraving origin. To change the engraving origin before engraving, move the laser head to the start position for engraving with direction keys, and press the key to confirm the current position of the laser head as the engraving origin. The key is only available when the system is in standby mode.

12. Up key. Press and hold the key when the system is in standby mode to move the laser head (Y axis), or elevating/feeding/ rotating axis upwards. Refer to the definition of the “Center” key for choice of a control axis. When inputting a number, press the key once and the value will increase by one. When selecting an operation document or changing the configuration of a parameter (e.g. language), press the key for upward selection.
13. Down key. Press and hold the key when the system is in standby mode to move the laser head (Y axis), or elevating/feeding/rotating axis downwards. Refer to the definition of the “Center” key for choice of a control axis. When inputting a number, press the key once and the value will decrease by one. When selecting an operation document or changing the configuration of a parameter (e.g. language), press the key for downward selection.
14. Left key. Press and hold the key to move the laser head leftwards1) when the system is in standby mode. Upon reaching the most space of X axis, the laser head stops moving and the key will be inoperative. (The most space of X axis can be set in machine parameters and is limited to the worktable size.) Upon setting the engraving speed and operation power, press the key once and the corresponding value will decrease by 10. When selecting an operation document, press the key to access the previous document. When inputting a number (e.g. pulse time), press the key for leftward selection and cursor location.
15. Right key. Press and hold the key to move the laser head rightwards when the system is in standby mode. Upon reaching the origin of X axis, the laser head stops moving and the key will be inoperative. (The most space of X axis can be set in the machine parameters and is limited to the worktable size.) Upon setting the engraving speed and operation power, press the key once and the corresponding value will increase by 10. When selecting an operation document, press the key to access the next document. When inputting a number (e.g. pulse time), press the key for rightward selection and cursor location.
16. Center key. In the main interface, press the Center key to choose a control axis from Y/Elevating/Feeding/Rotating axis. Or select the automatically focus function.

Software and Soft dog (dongle) are included.



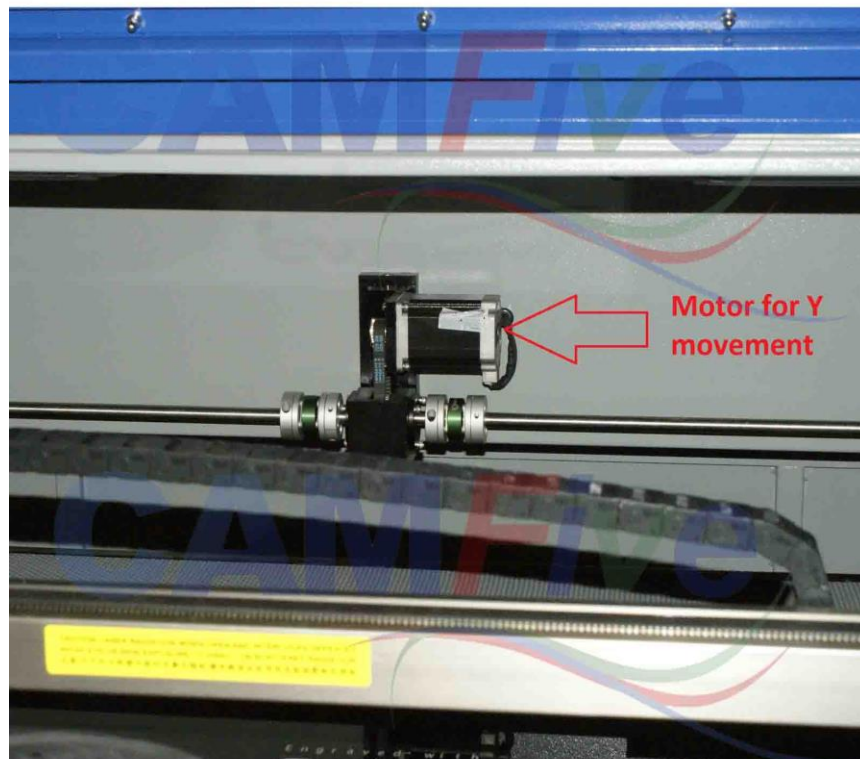
A tool kit is provided for maintenance purposes



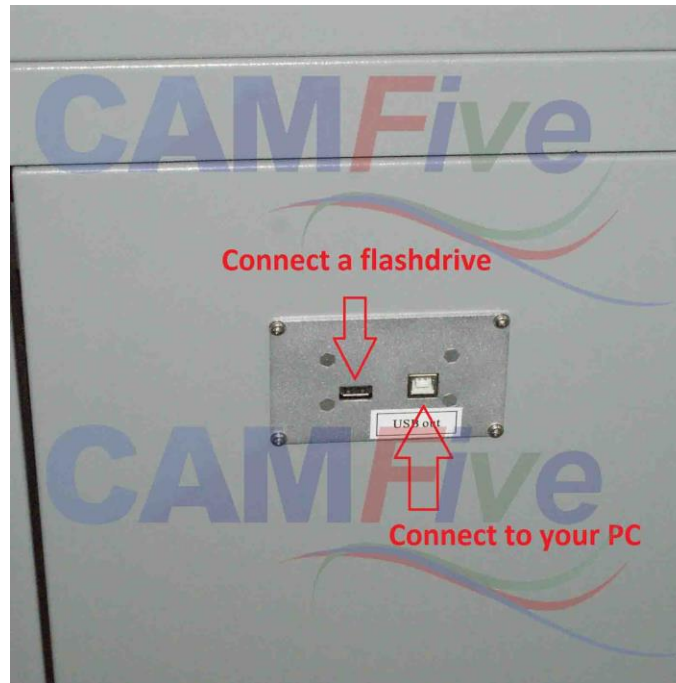
Lubricating oil and alcohol solvent are also part of the maintenance kit



The pictures below show the X and the Y step motors.



The interface input/output provides connection to your PC and also a USB input to store files in the laser machine internal memory.



INSTALLATION

The following steps will guide you through the installation process. At this point the electrical requirements have to be completed.

1. Chiller installation.



Connect the water outlet of the chiller to the water input in the laser cabinet. Then, from the water output port of the cabinet to the water inlet of the chiller. Once the laser tube has been set in place inside the cabinet the water hose connection is the next step.



2. Connect the water hoses accordingly as marked. Then fill the chiller compartment with distilled water. It will take about 1.5 gallons of water.



3. Connect the air assist compressor to the air pump inlet in the laser cabinet.



4. Set the laser tube in place. The picture below shows the laser tube in position and the laser beam path. The end with the green/yellow wire (cathode) faces the first mirror.



5. Connecting the laser tube to the power supply.
 - a. Connect the Cathode wire (yellow/green) to the contact bar as shown in the picture below.



- b. Connect the Anode (red wire) to the power supply.



6. Turn "ON" sequence.
 - a. Turn "ON" switch on the voltage regulator.
 - b. Turn "ON" circuit breaker on the main cabinet



- c. Turn "ON" safety key switch
 - d. Press the white push down button to activate the laser.
 - e. Adjust output power potentiometer to the max position.
 - f. Turn "OFF" sequence will be the opposite.

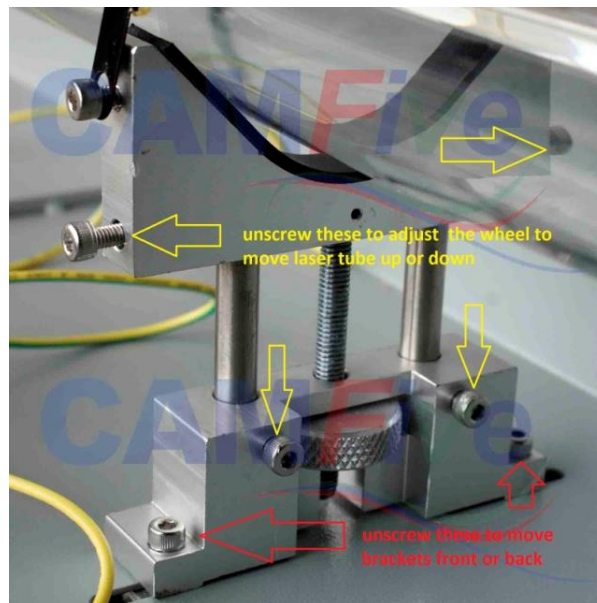


CALIBRATION

7. The first step is to set the max power on the control panel to 30% output power. This is done by pressing the max power key pad and setting the percentage by using the left or right arrows. Once is reached press Enter. Start the process by putting a piece of clear tape (scotch tape) on the first mirror ring and pressing the pulse key pad on the control panel. The picture below shows how it has to look once the laser tube has been aligned by using the bracket adjustments. The thumb knob allows you to move the tube up or down and the screws on the side to move it back and forth.



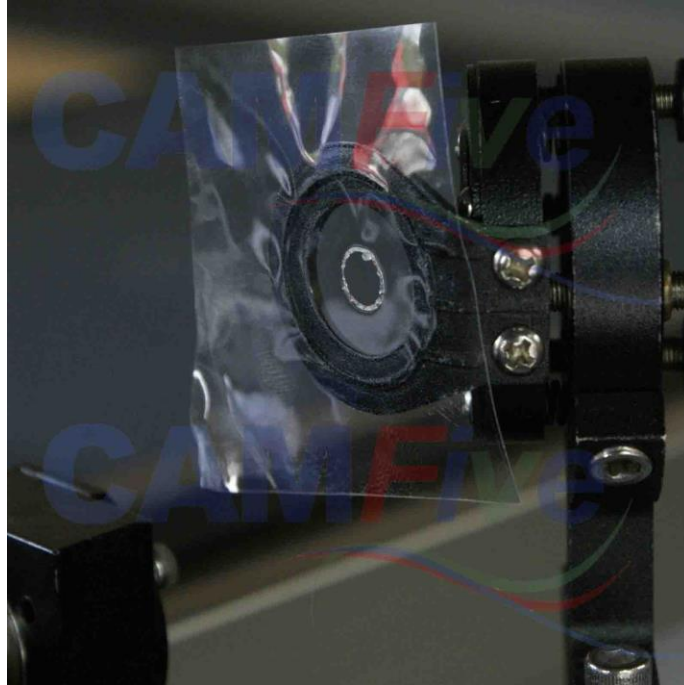
The adjustments are described in the picture below.



8. Once the tube has been aligned we will proceed to calibrate the first mirror. Put a piece of tape on the second mirror ring (on the rail). By using the left and right arrows set the laser pen in the center of the work area. Then, use the up/down arrows to move the X rail close to the back of the cabinet about 8" away from the back of the cabinet. Press the pulse key to see where the laser beam hits the tape. The top adjustment allows you to move the mirror up and down in an angle the same effect does for the bottom one. The center adjustment allows you to move left and right. Slightly move one of them to see the direction the laser beam moves. Send another pulse to verify. Center the hole like the first ring. Move the x Rail towards the front of the cabinet set another piece of tape and send another pulse. Compensate as required to center the laser beam.

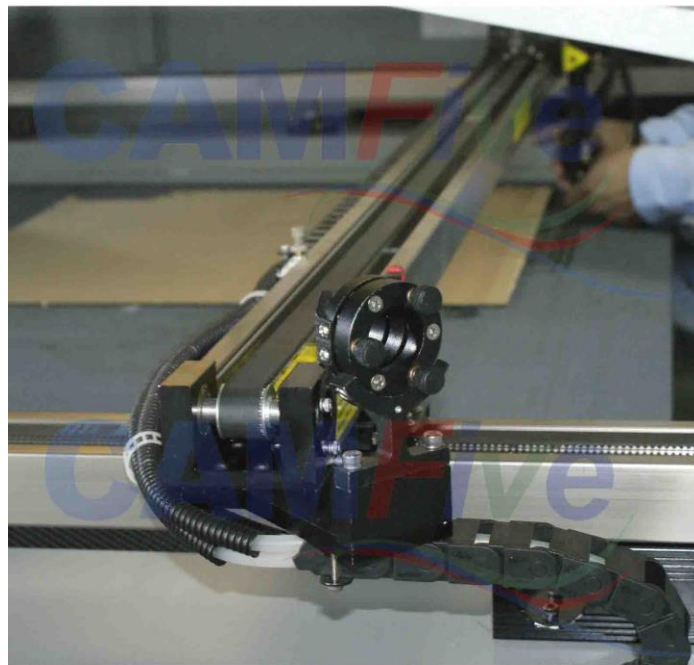


This picture shows the first mirror calibration.



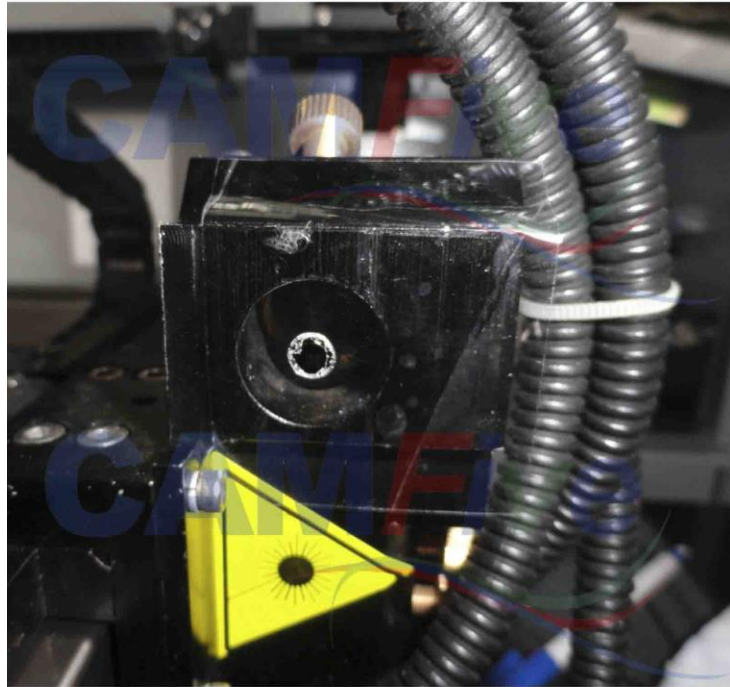
Note: the tape is on the second mirror ring.

9. To calibrate the second mirror we will place a piece of tape on the third mirror which is located on the top of the laser head.

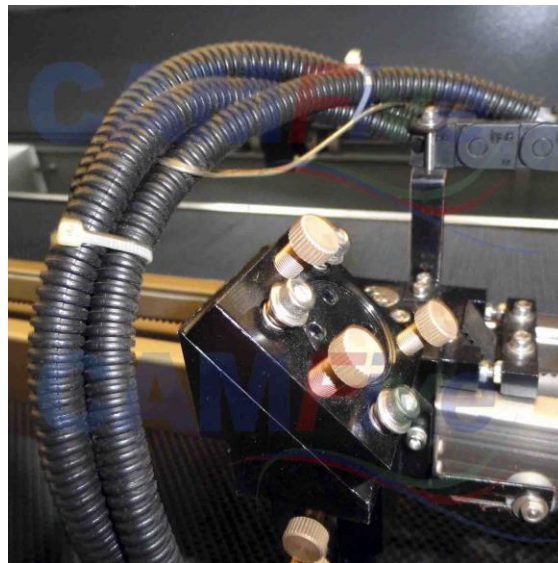


Calibration adjustments on the second mirror

The picture below shows the second mirror calibration.



10. The final step for calibration is to adjust the third mirror located on top of the laser head. These adjustments are different from mirrors 1 and 2. This mirror is deflecting the laser beam downwards to the material that is being cut or engraved. Therefore; the adjustments are the opposite.



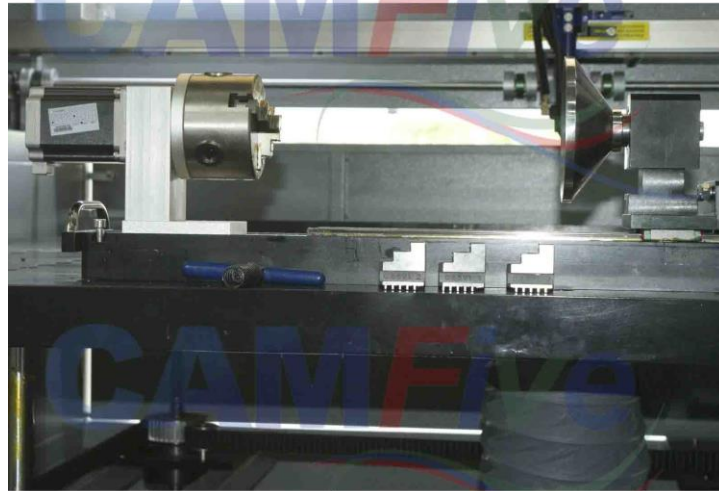
Place a piece of tape on the laser pen tip (nozzle) and press it against it to mark the round tip. Send a pulse. The result will show the direction that needs to be adjusted.

Slightly turn the adjustments less than quarter of a turn until the laser beam is centered on the tape.



This will conclude the calibration procedure. Make sure to return the max power back to 100% on the on the control panel as described is step 1.

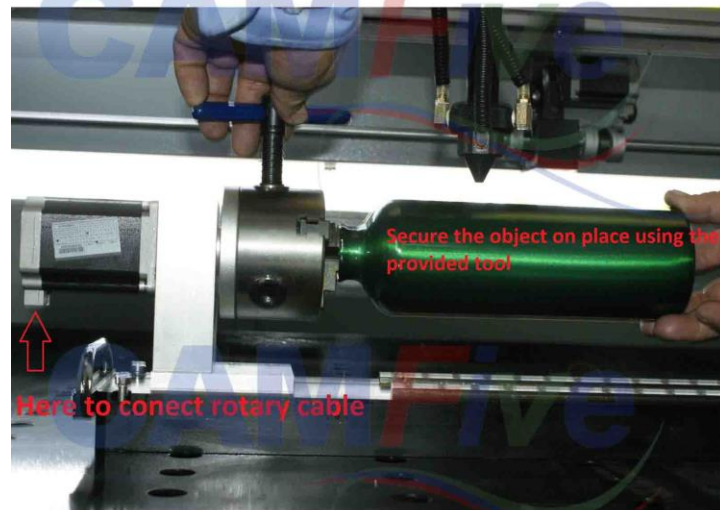
ROTARY ATTACHMENT INSTALLATION (Models 1390K, 1080K and 6040K Only)



1. Removed the honeycomb bed and set the rotary attachment in place. Secured with screws provided. Move the table down by pressing the inner circle on the control panel. Select the rise and fall option and press enter. Use the up and down keys to move the table. Once is set in position go back to the menu and select Y axis and press Enter to reactivate the Y movement.



2. Connect the cable and place object.

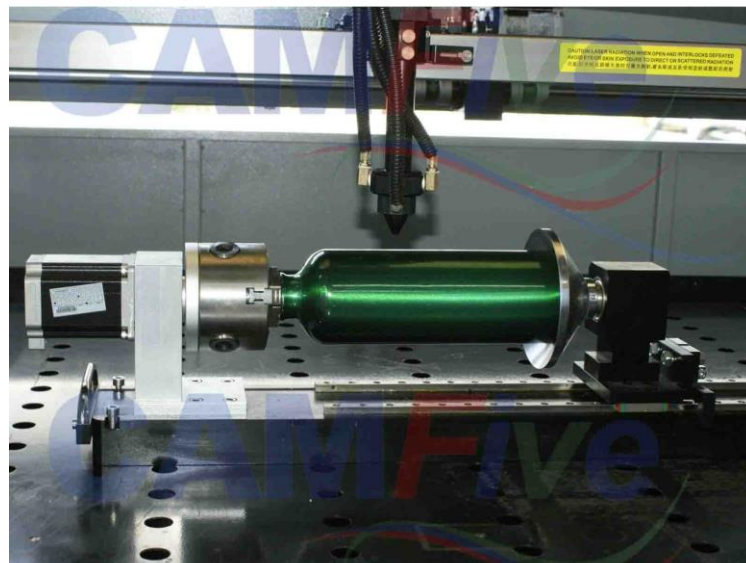


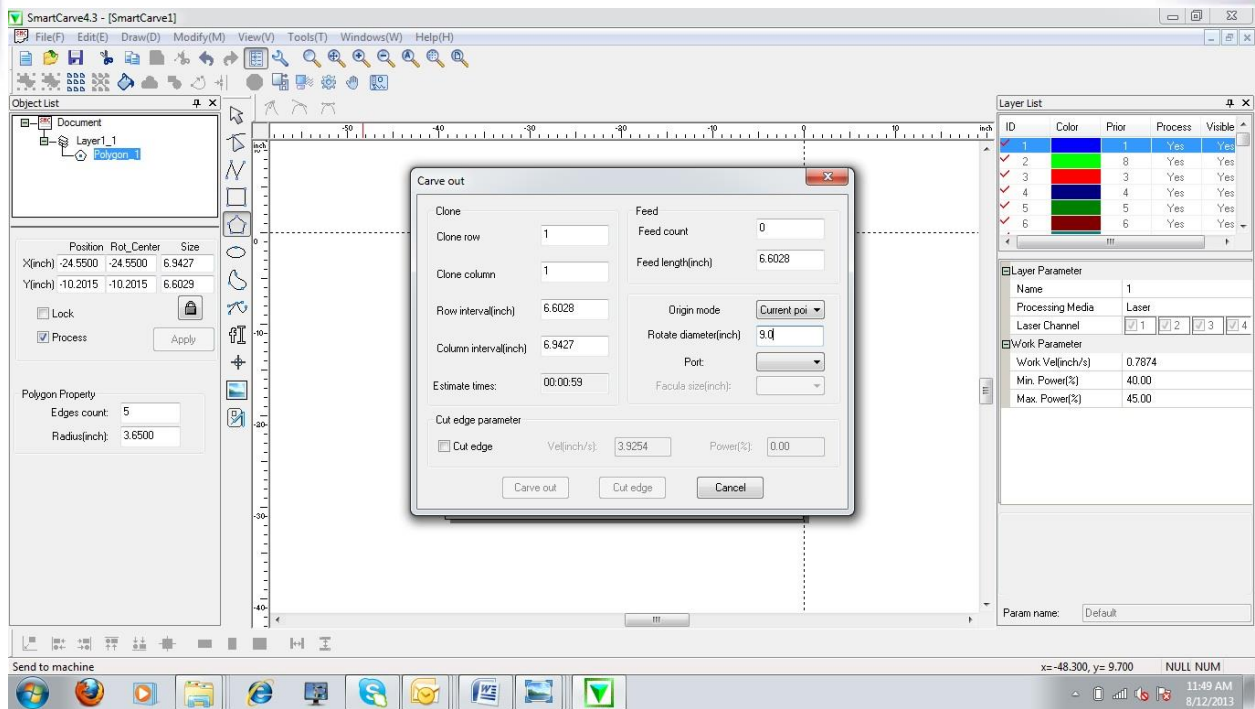
3. The picture below shows how to adjust the chuck. The attachment comes with two sets of dice one is for pressing in and the other one is for pressing inside out. Do not over tight the object.



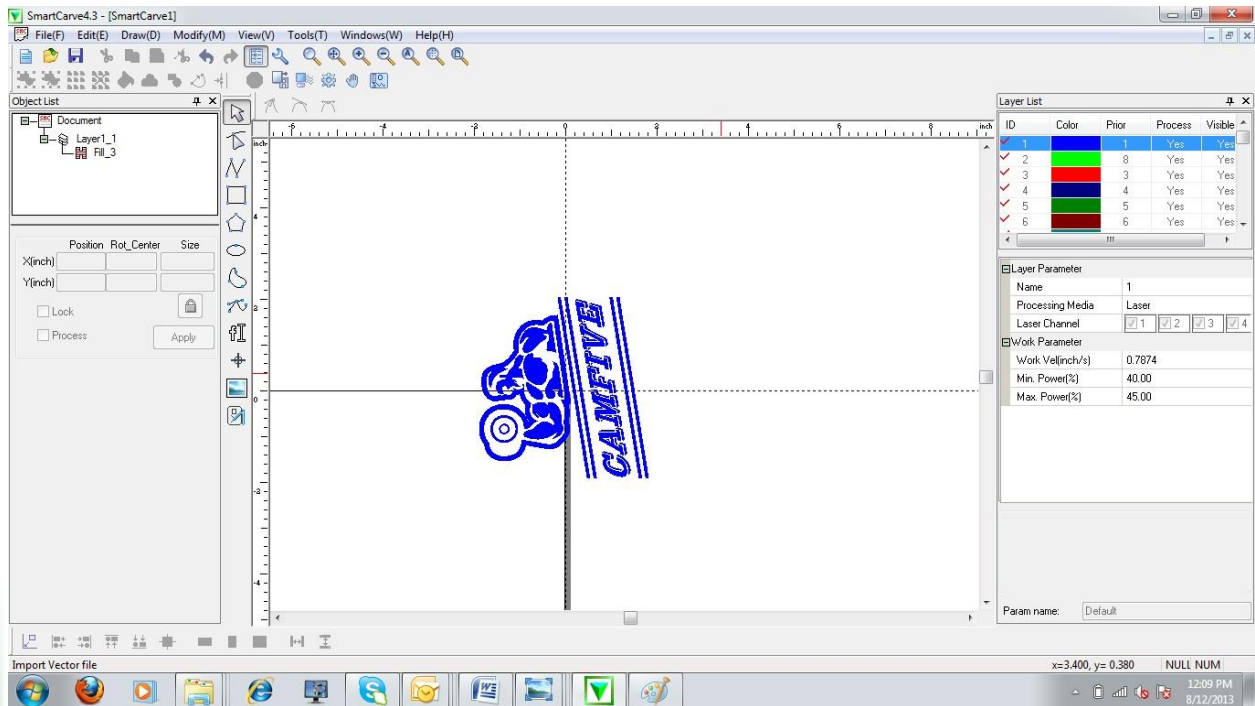


4. Once the object is set in place. The dimensions play an important role. The work area has to be calculated to avoid any accidents that may damage the laser pen. The circumference of the object has to be entered in the software to determine the rotation. This is done by multiplying the diameter by 3.1416. The result will be entered in the box that reads Rotate diameter in the carve out option.



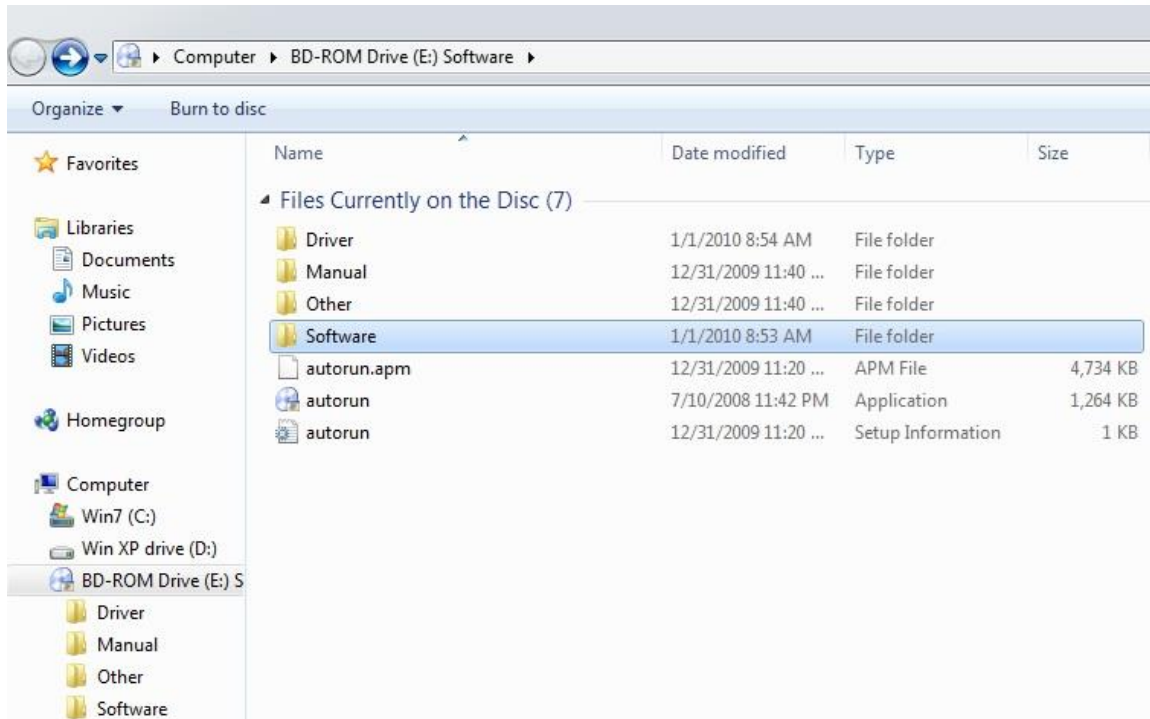


The design has to be rotated and centered as shown in the picture below. The laser pen has to be set on center of the object before pressing the carve out option. Make sure to reset the rotate diameter to zero once the rotary attachment is removed.

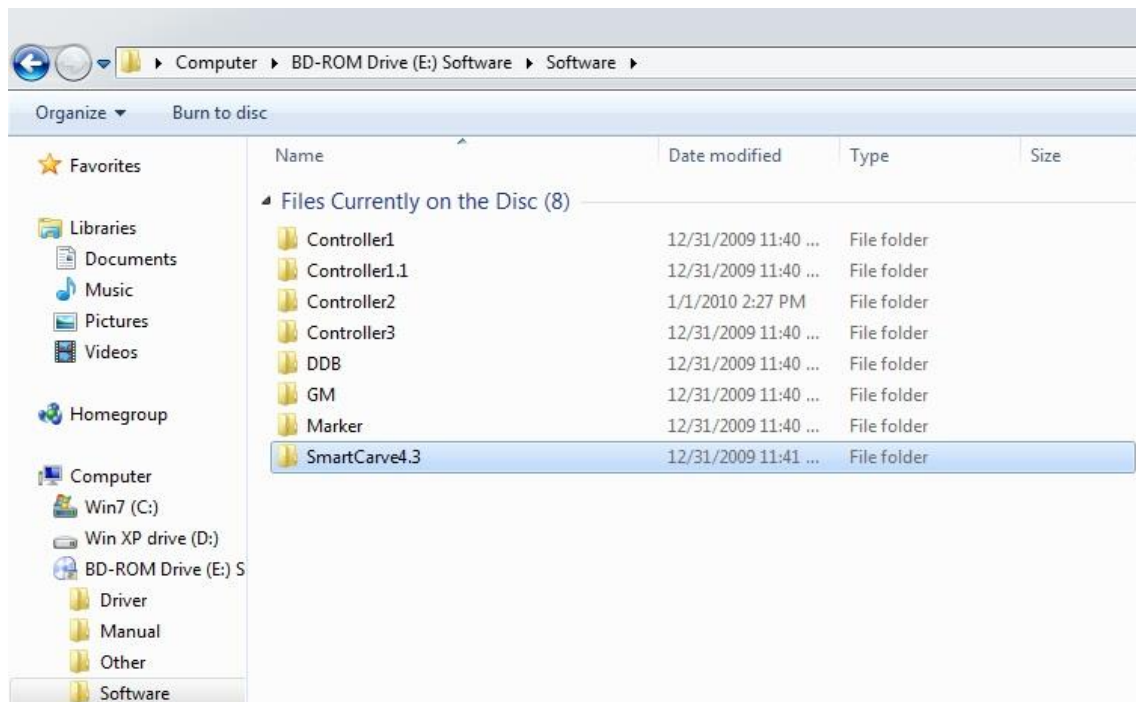


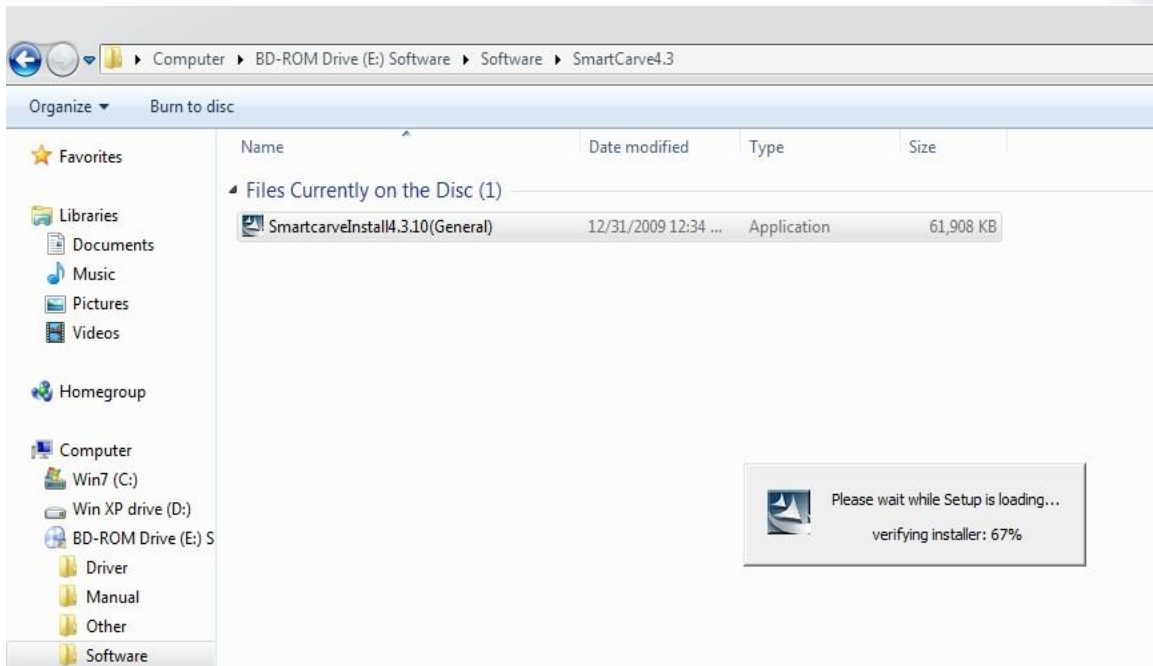
SOFTWARE INSTALLATION

Insert the soft CD into CD-ROM and the soft dog into a USB port. The following dialogue box will show up: Select software folder.

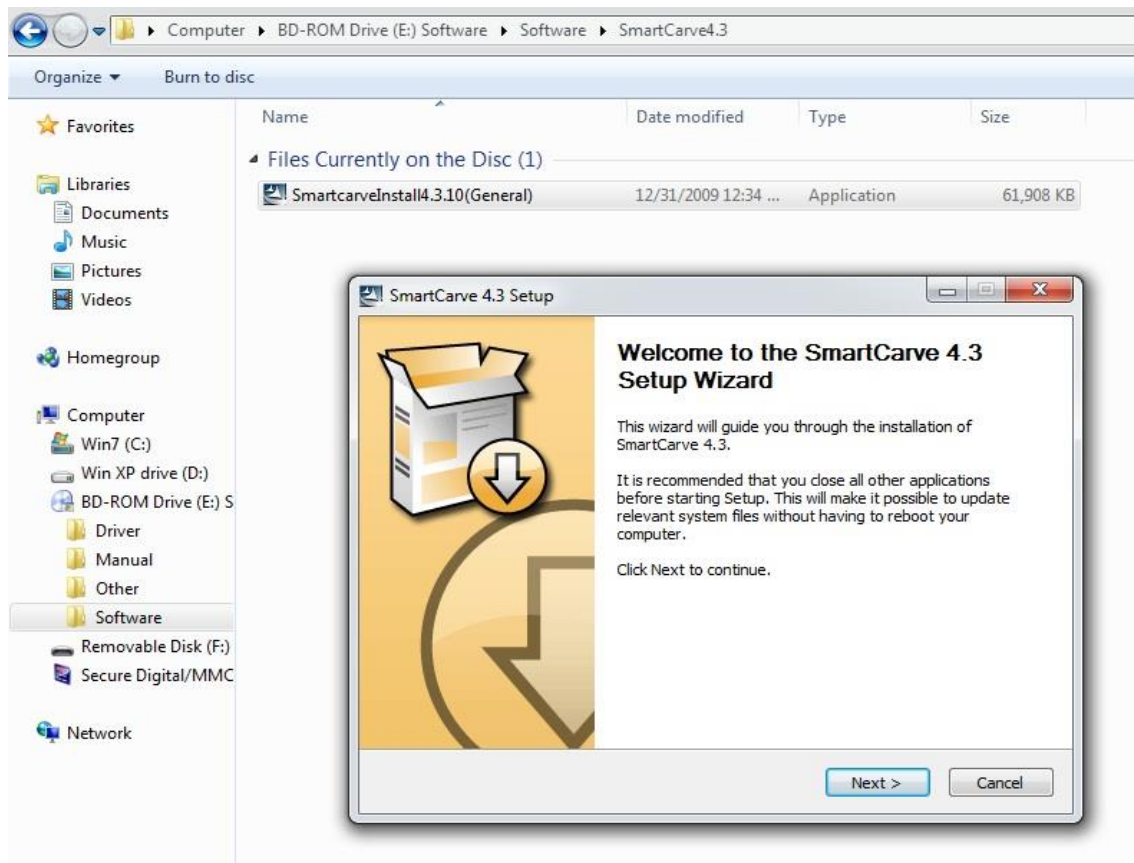


Click on the SmartCarve4.3 folder. Then click on the SC software to start loading.

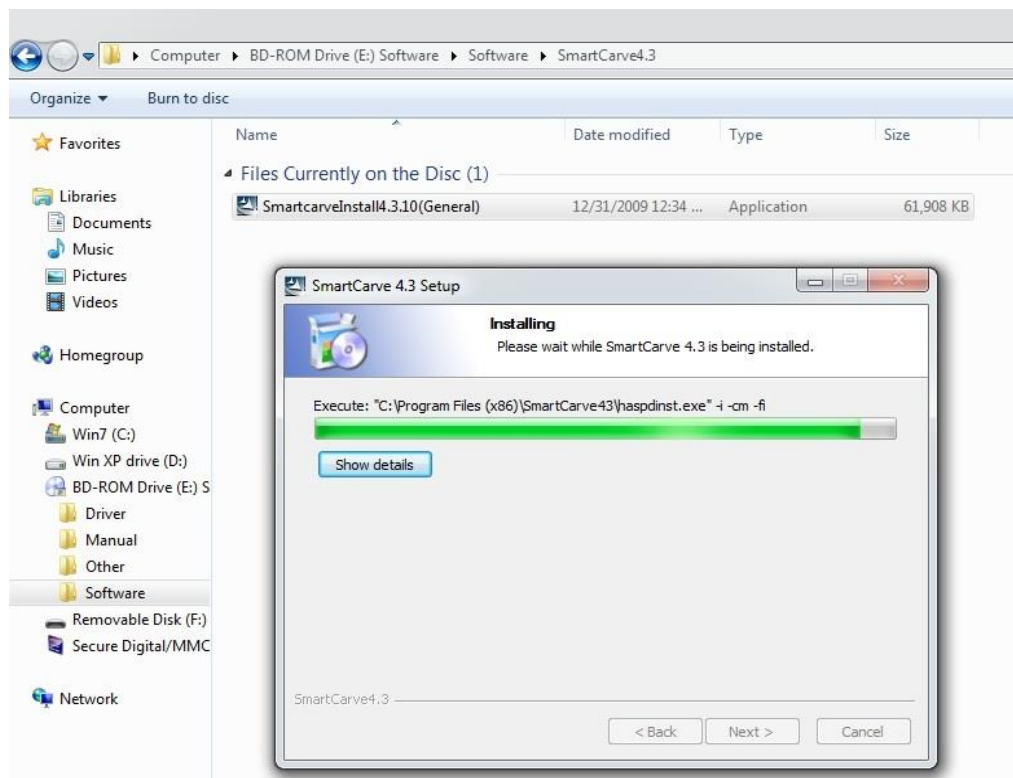
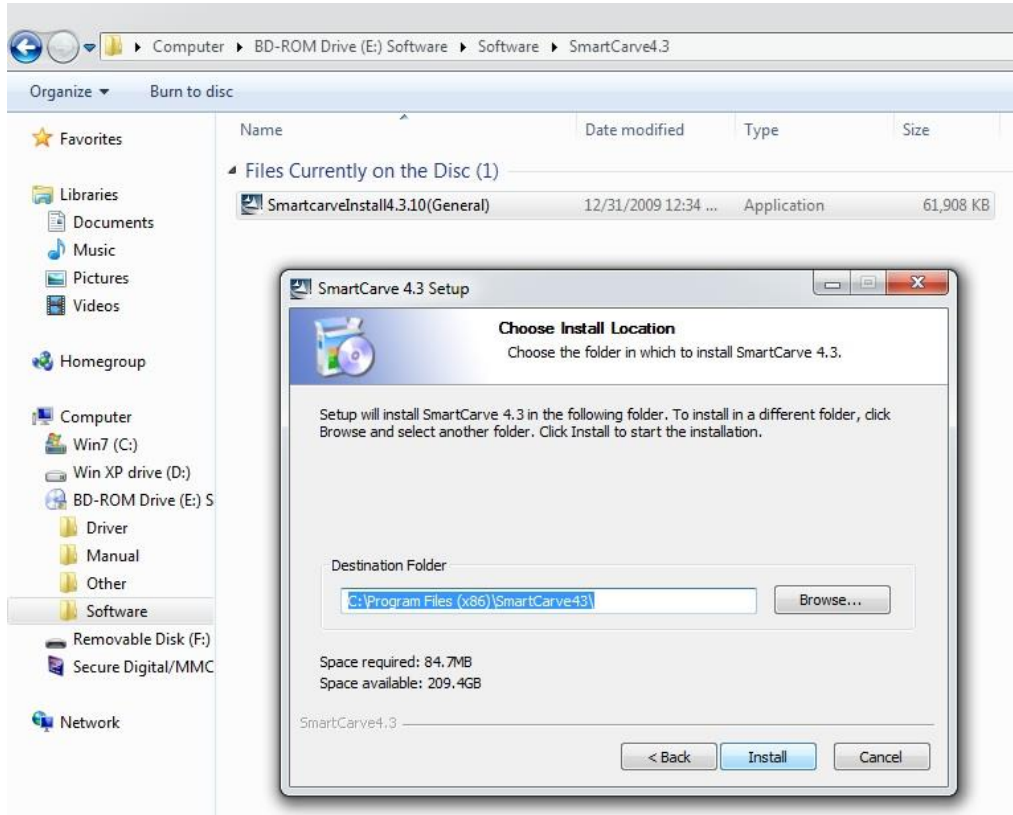




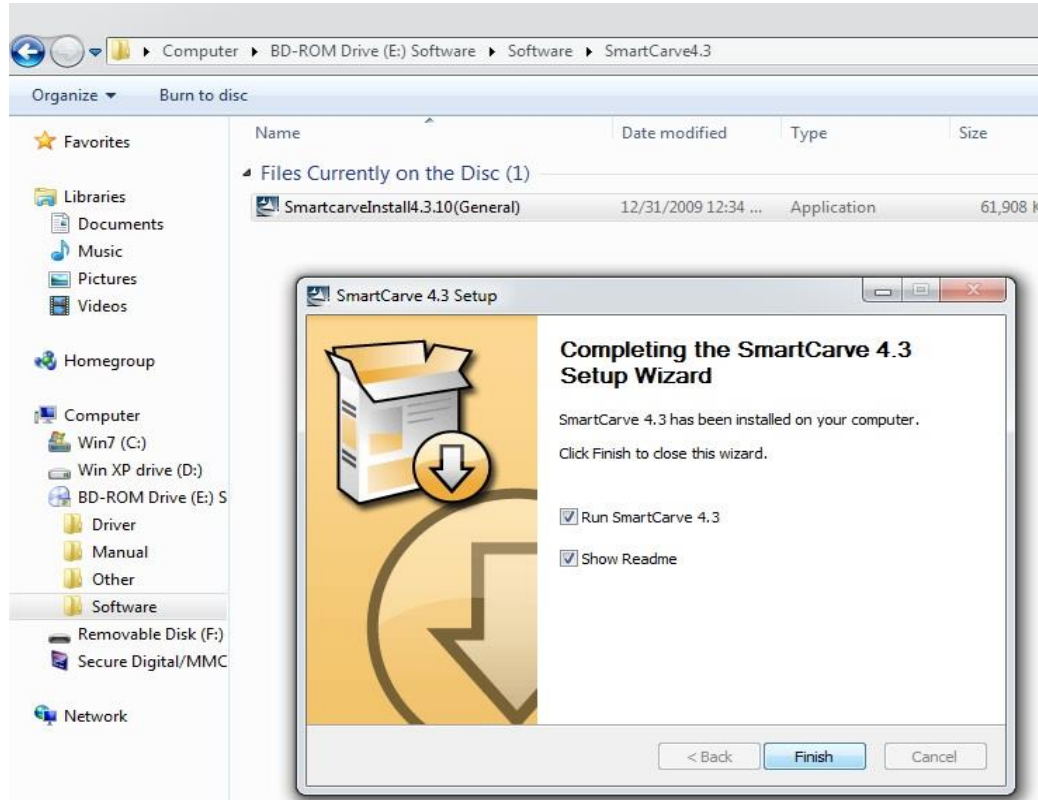
Press Next to continue on the following window.



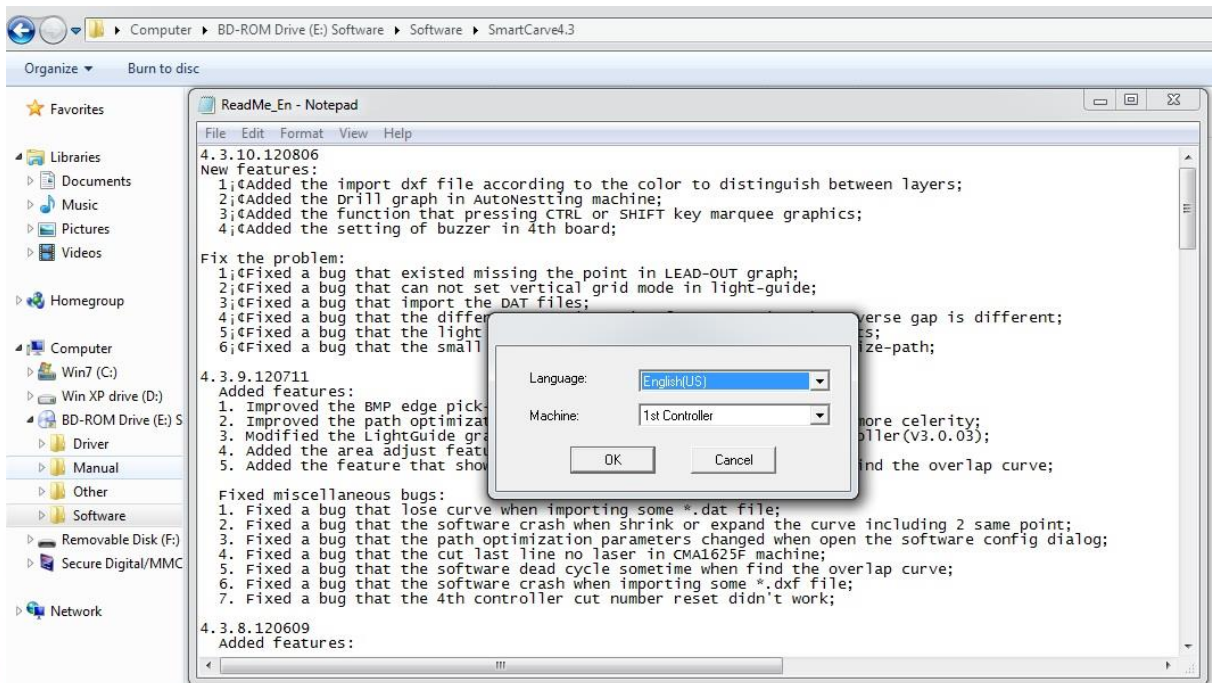
Proceed to install software.



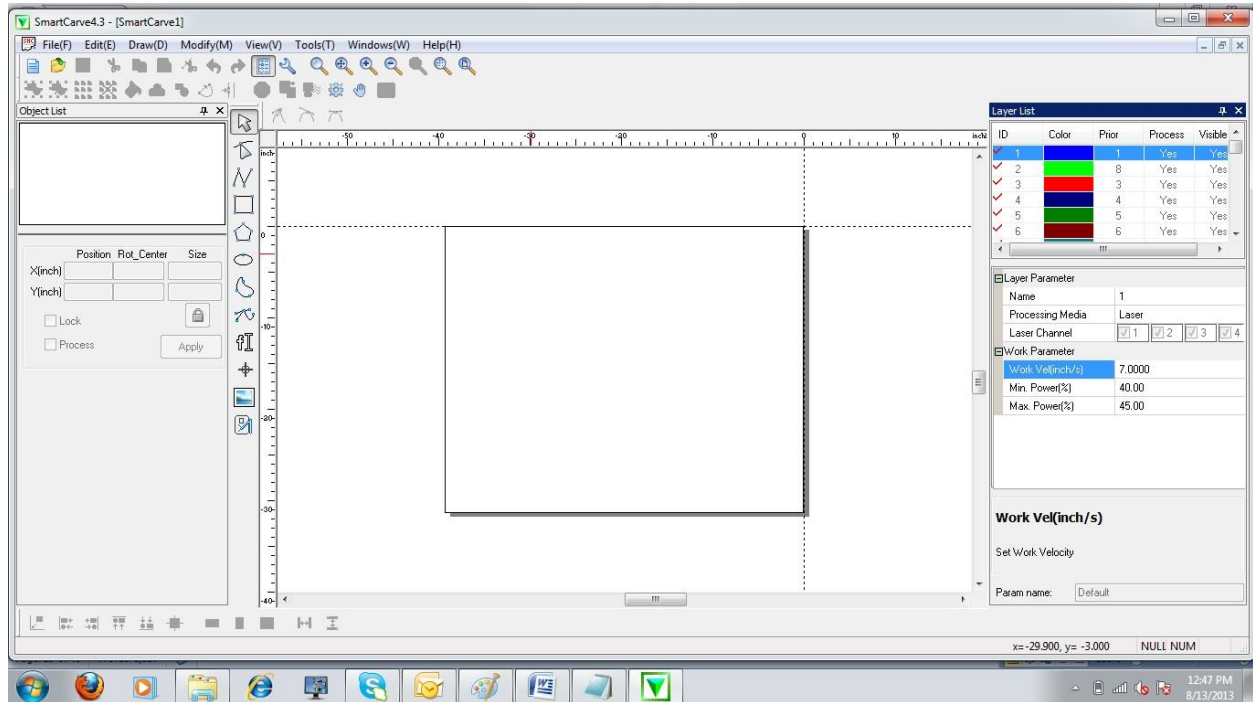
Press Finish to complete the software installation.



Select your language, and then click “OK”.



The software has been successfully installed the following screen will appear in the PC.

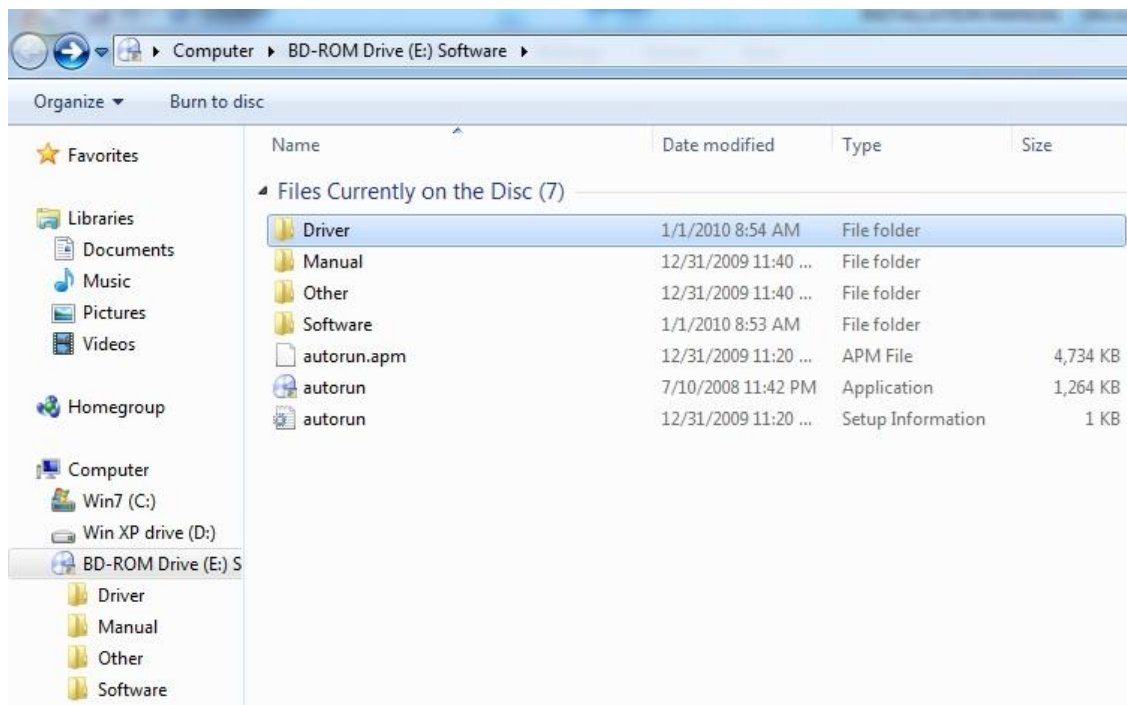


LOADING THE DRIVERS

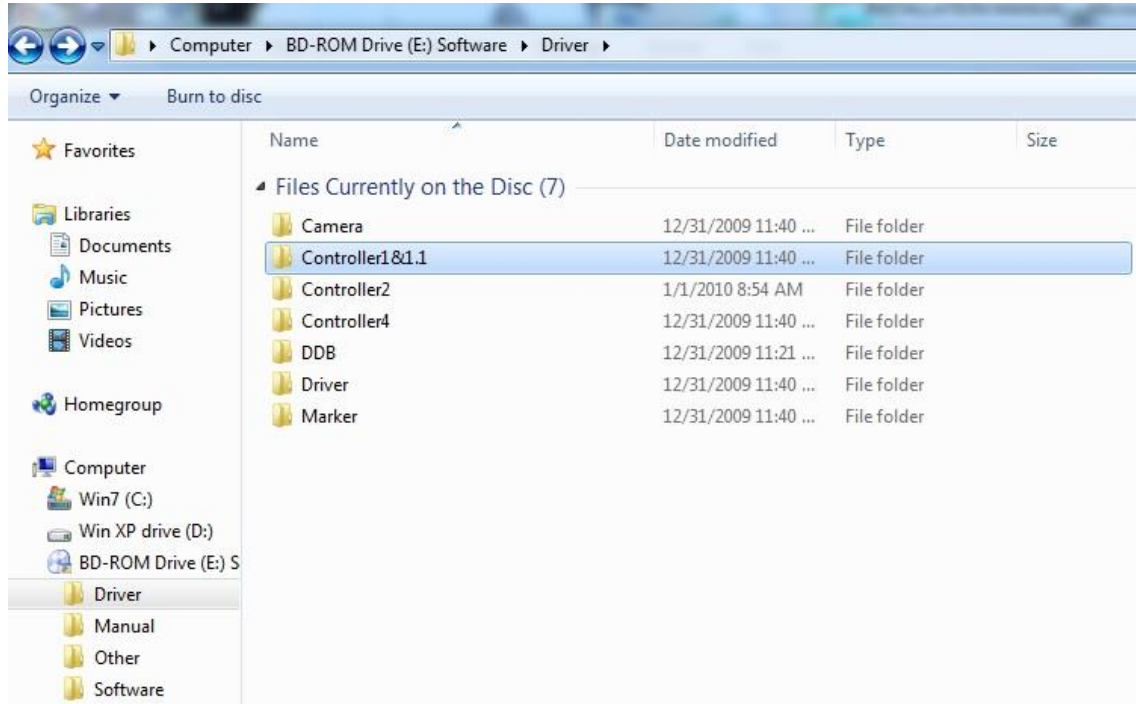
Connect the USB cable provided from the PC to the laser cabinet.



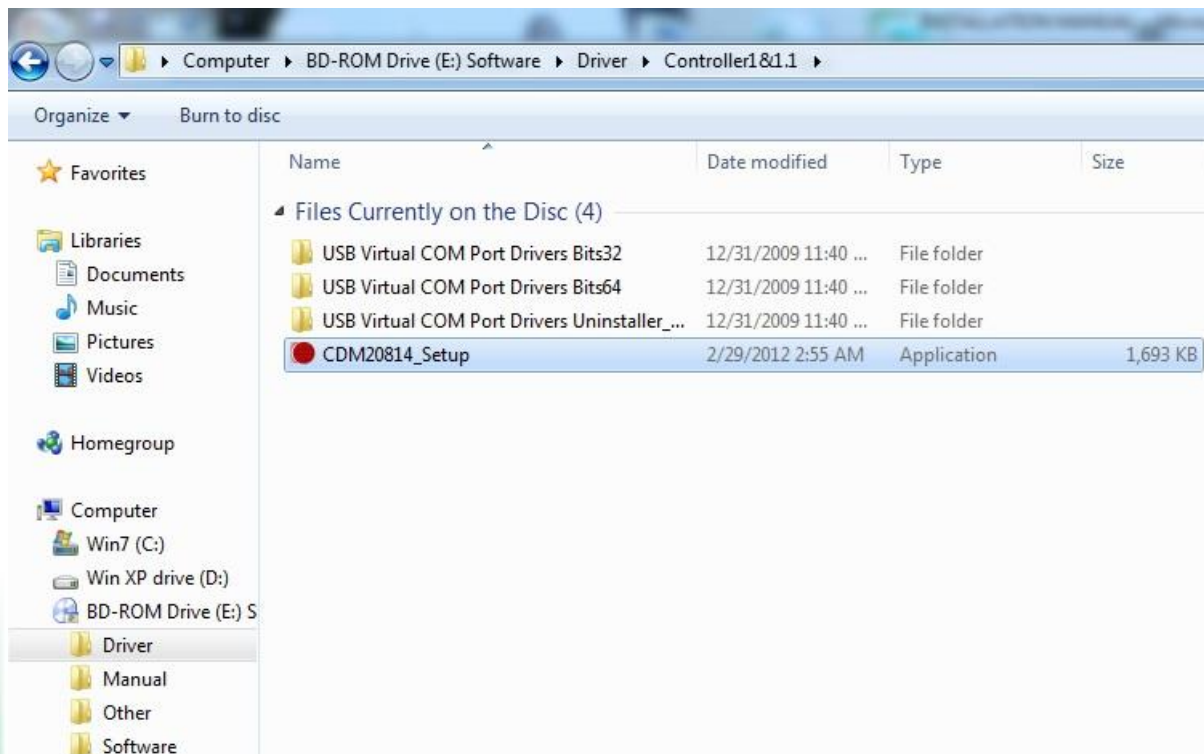
From the main menu on the software CD select the Driver folder.



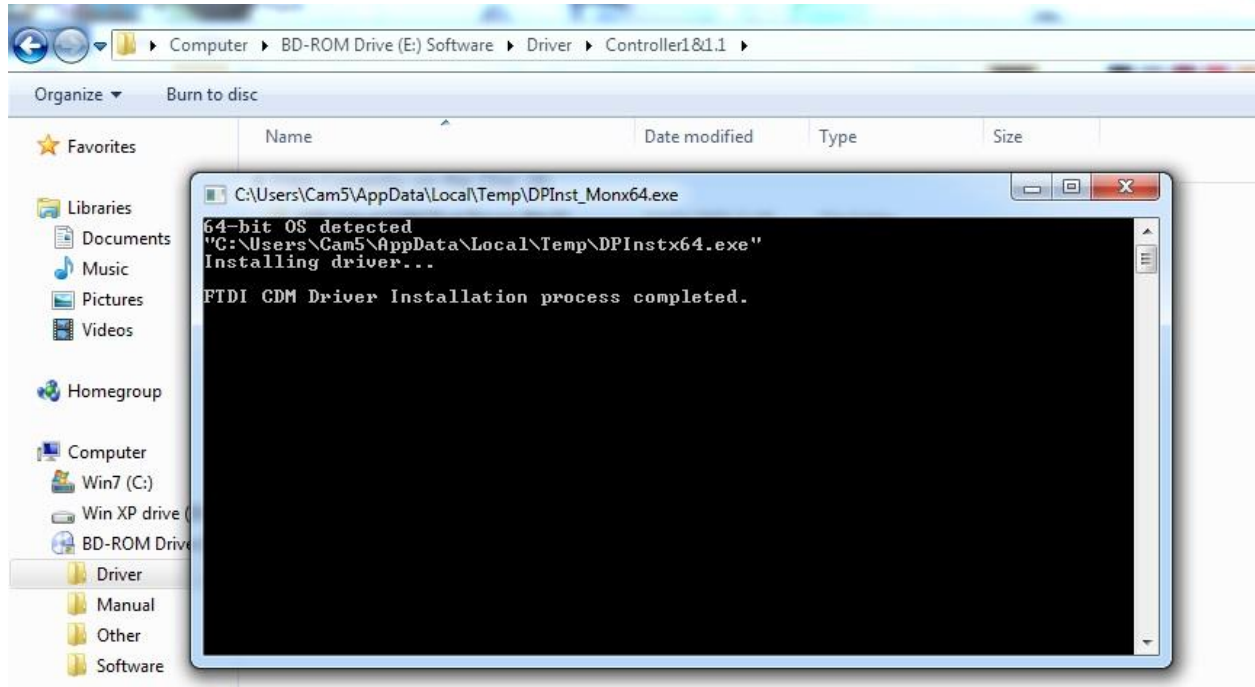
On the next menu select controller 1 & 1.1



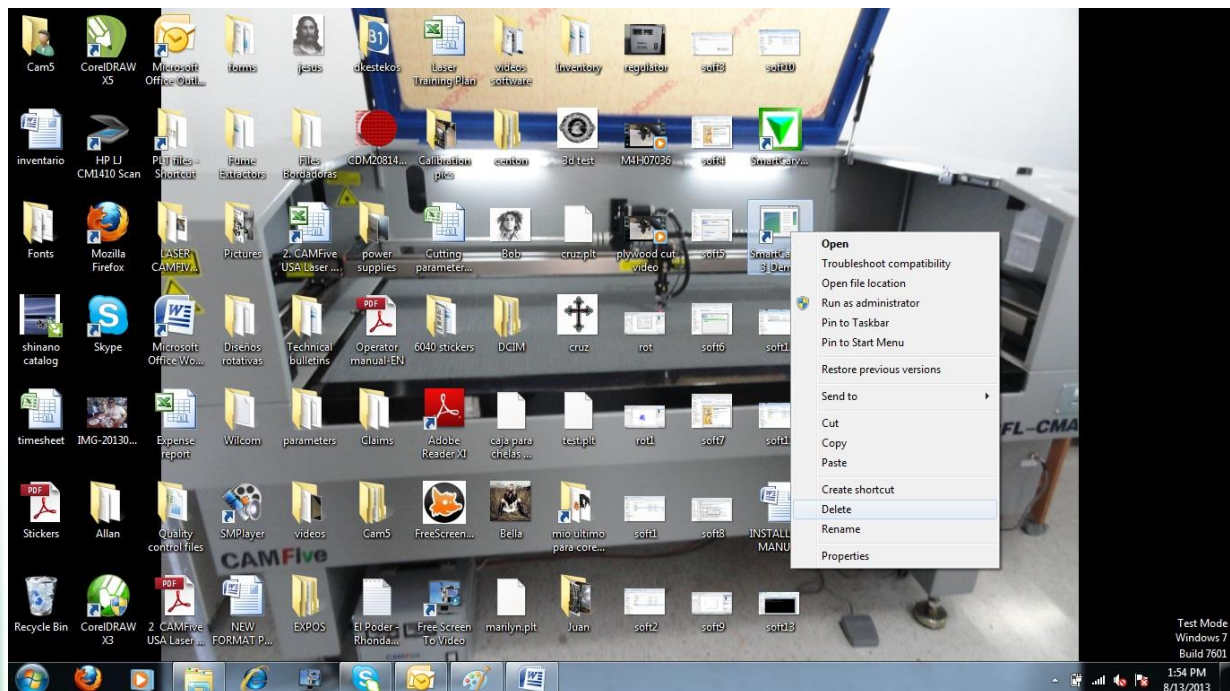
Next, click the CDM20813_Setup option.



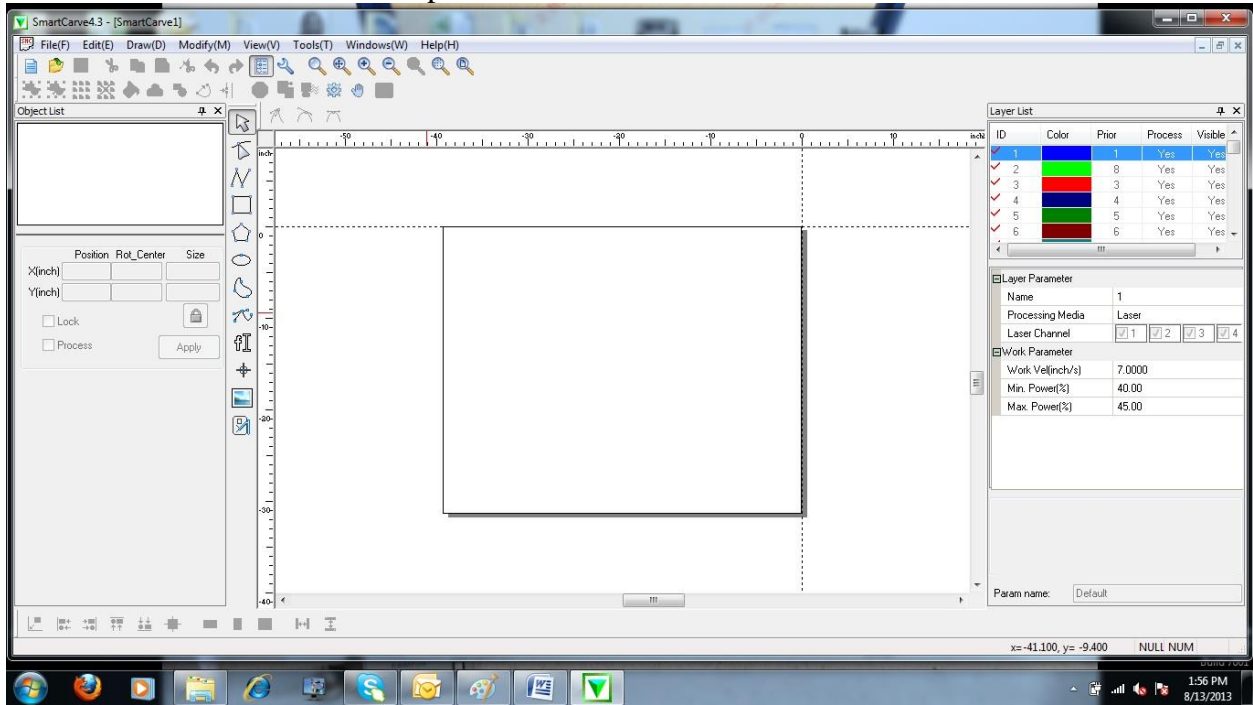
Driver installation screen shown below. Close menu and store the CD in a safe place after making backup copies. A folder with the software on the desk top is also recommended.



The Smart Carve icon will be display on the desktop of the PC along with a demo File. This file can be deleted due to expiration time.

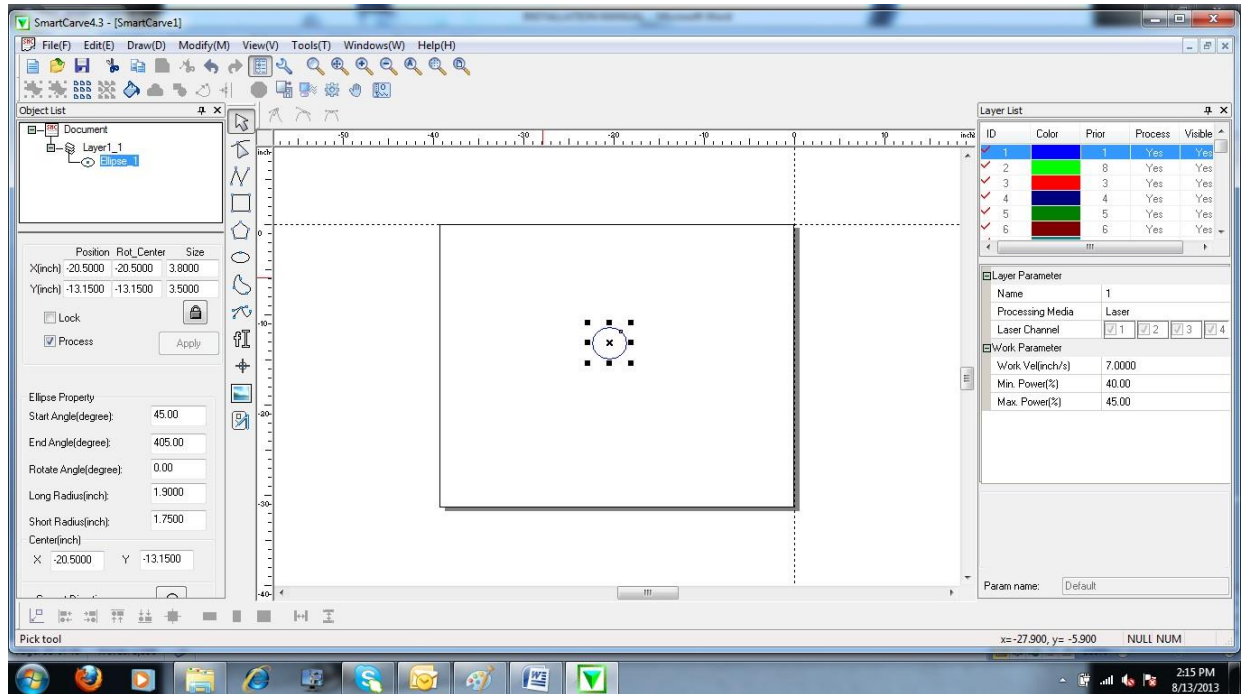


Double click on the SM icon to open the software.

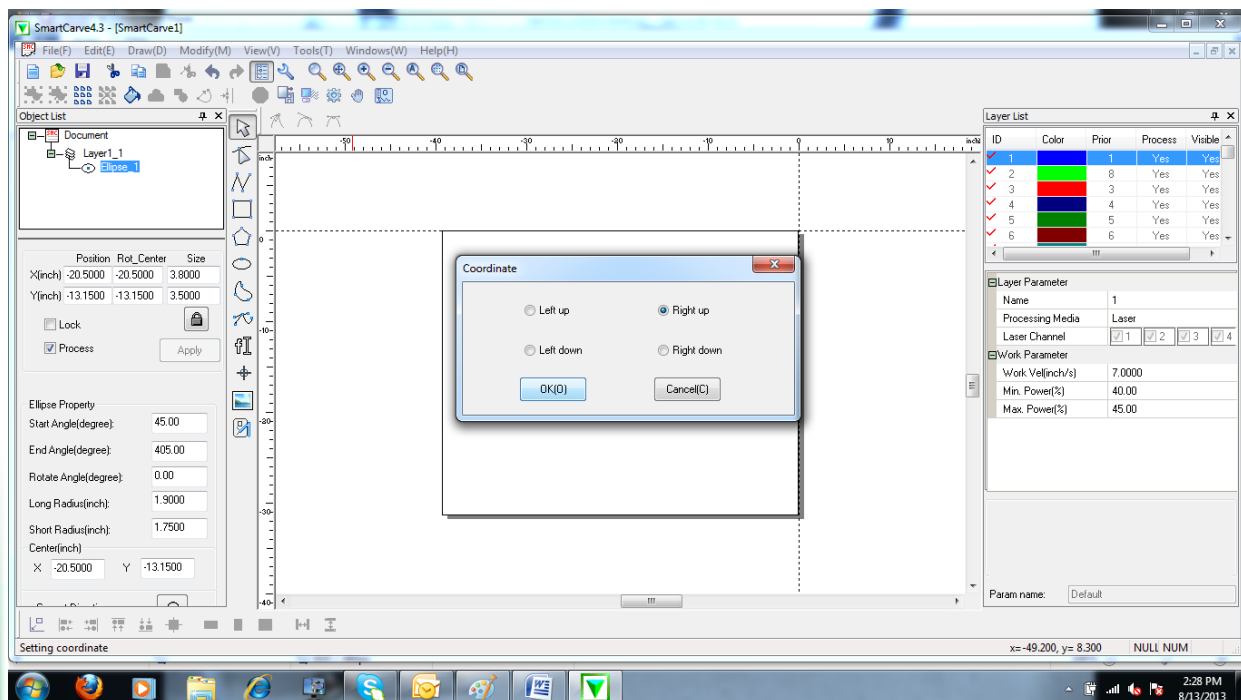


TESTING

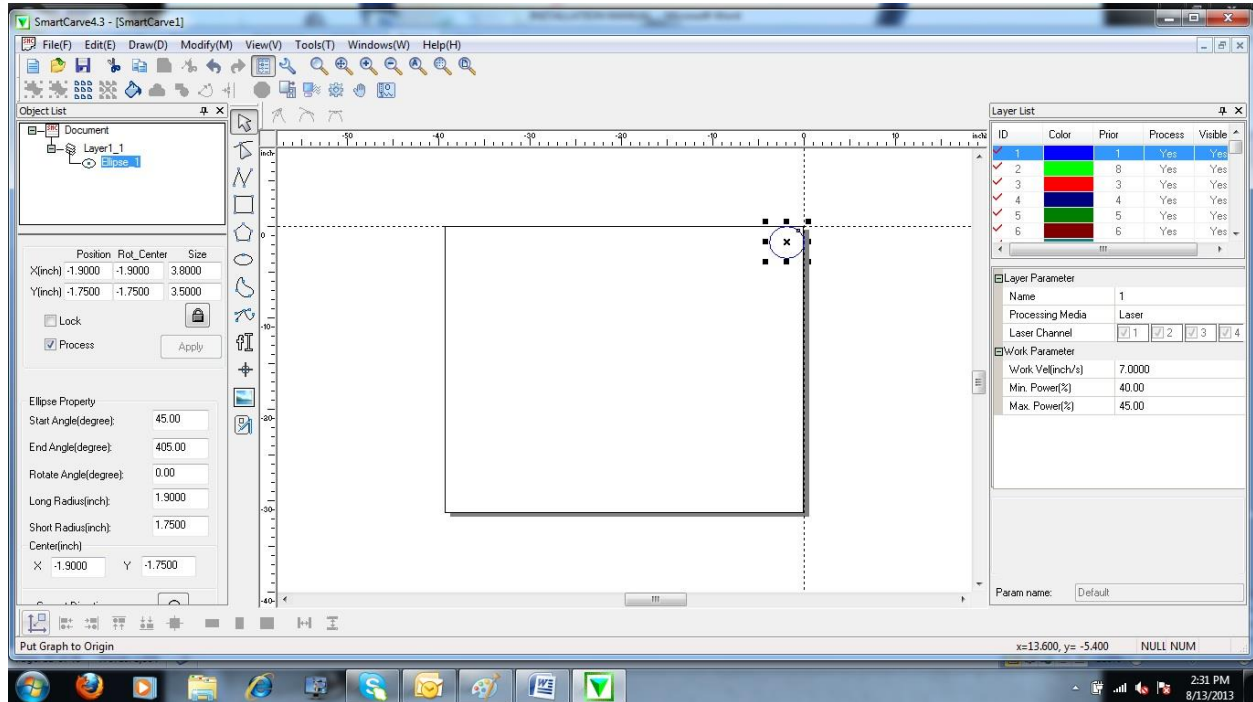
Open the software from the desktop. Using the drawing tools, Click on the Ellipse icon to make a circle.



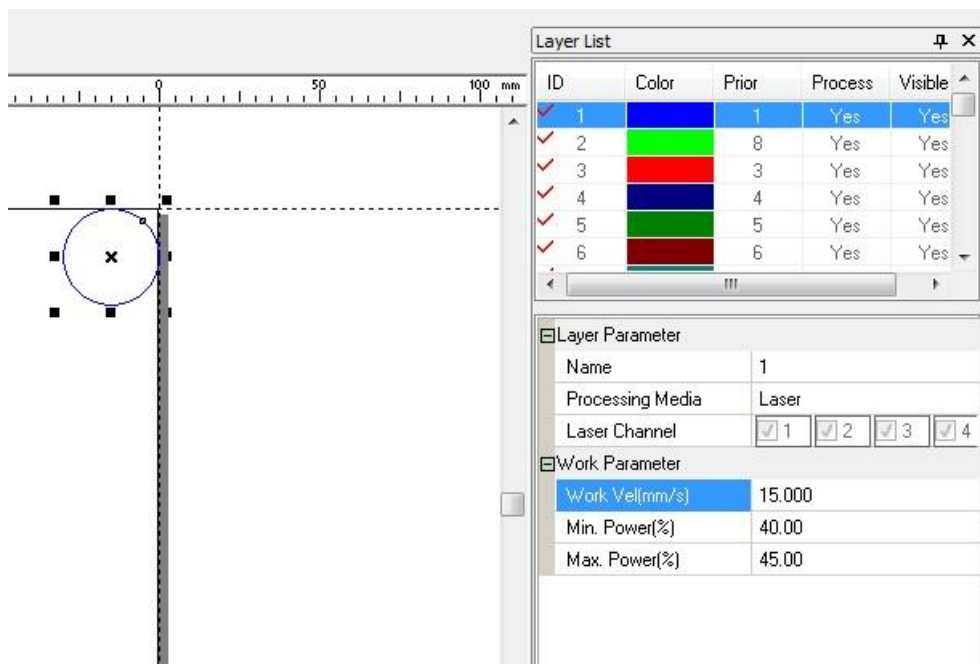
Set the point of Origin by opening the modify menu and selecting coordinate. Select Right up option.



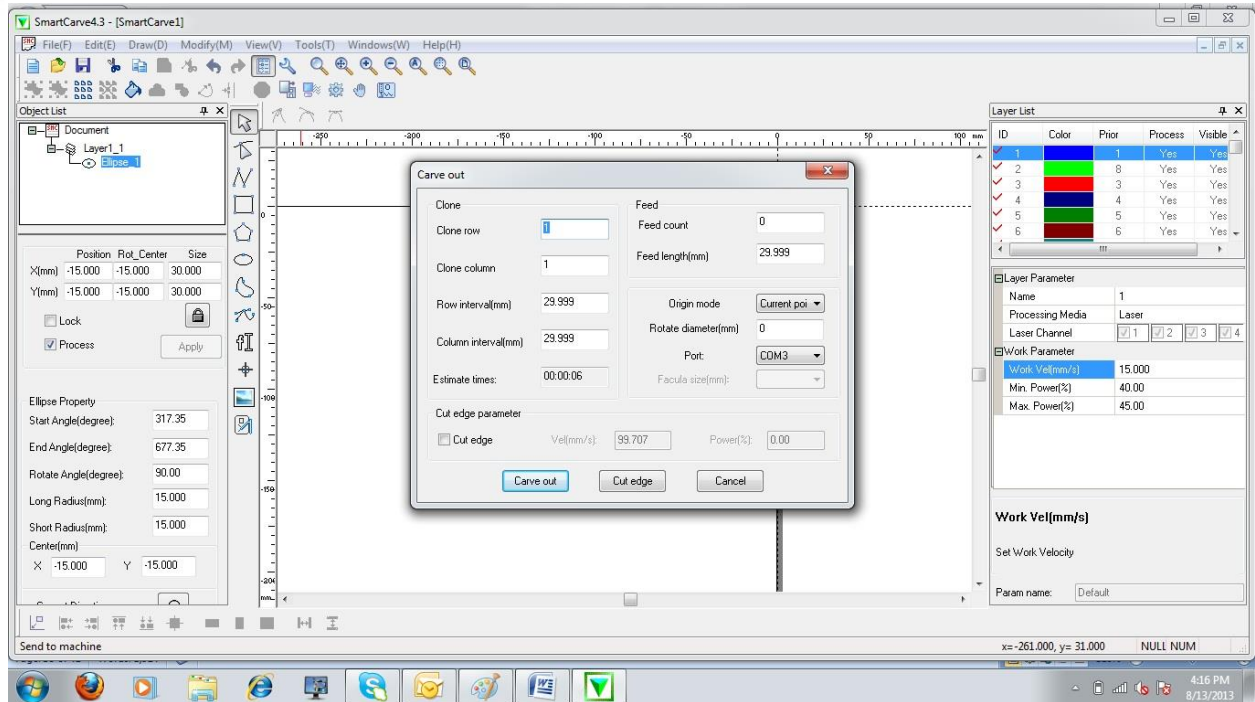
Select the circle and set it to the point of Origin by clicking on the lower left menu first icon.



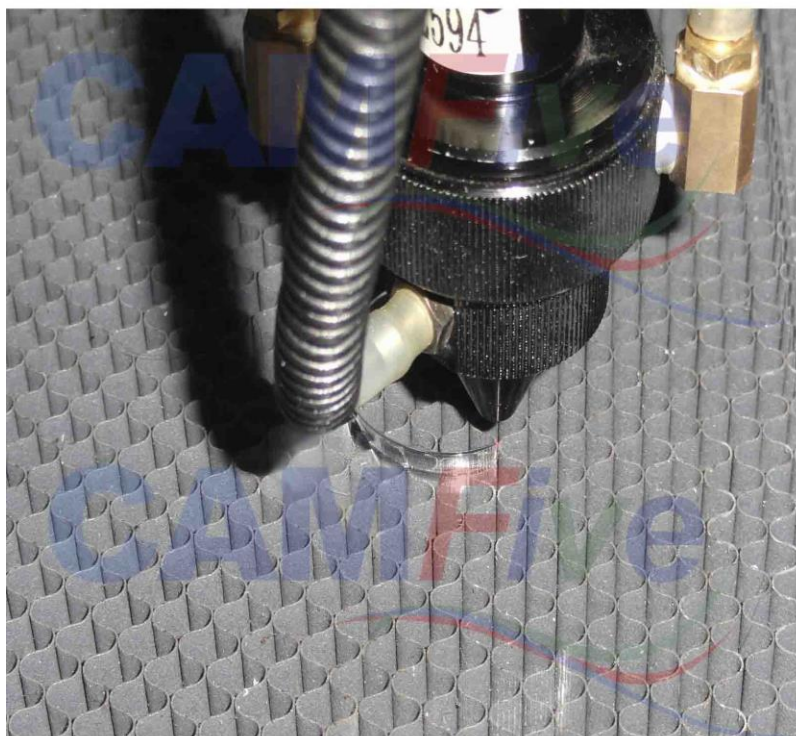
Set the working parameters. We will be cutting a piece of ¼ inch acrylic. Under the tools determine which unit system to be use. Metric or British system. For testing we will use Metric.



Send the job to the laser machine with the carve out option.



Laser at work.

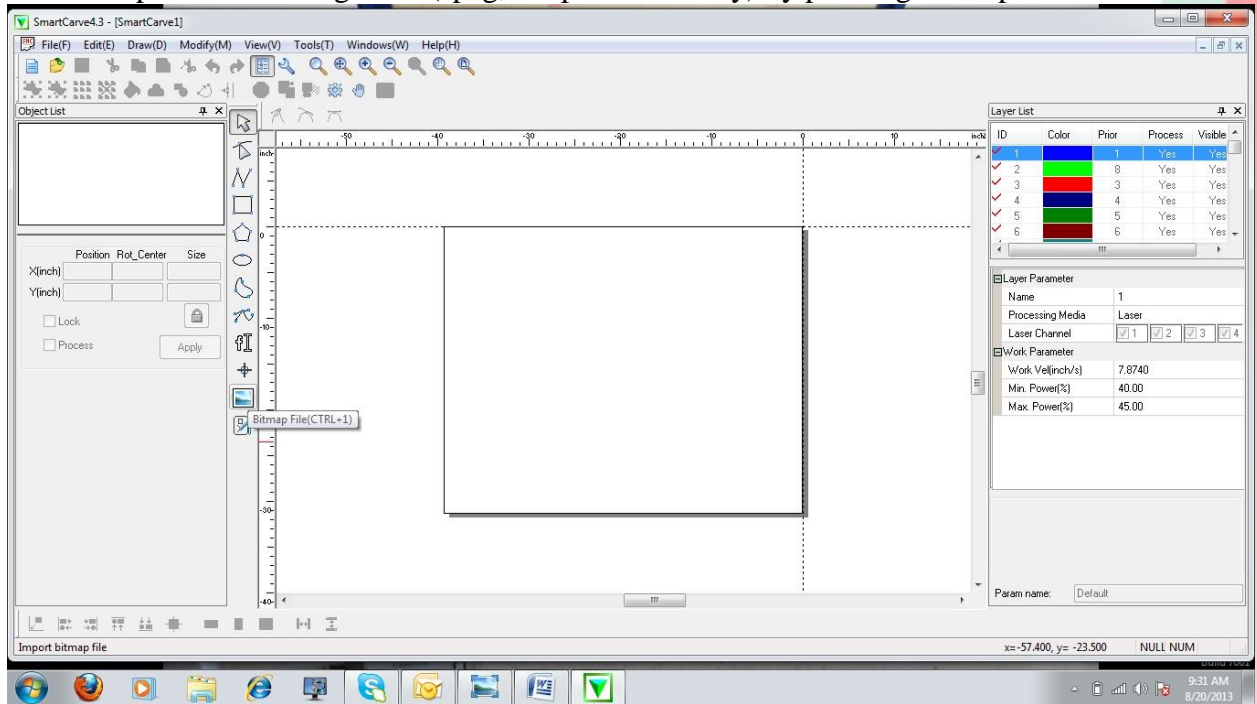


Final Product.

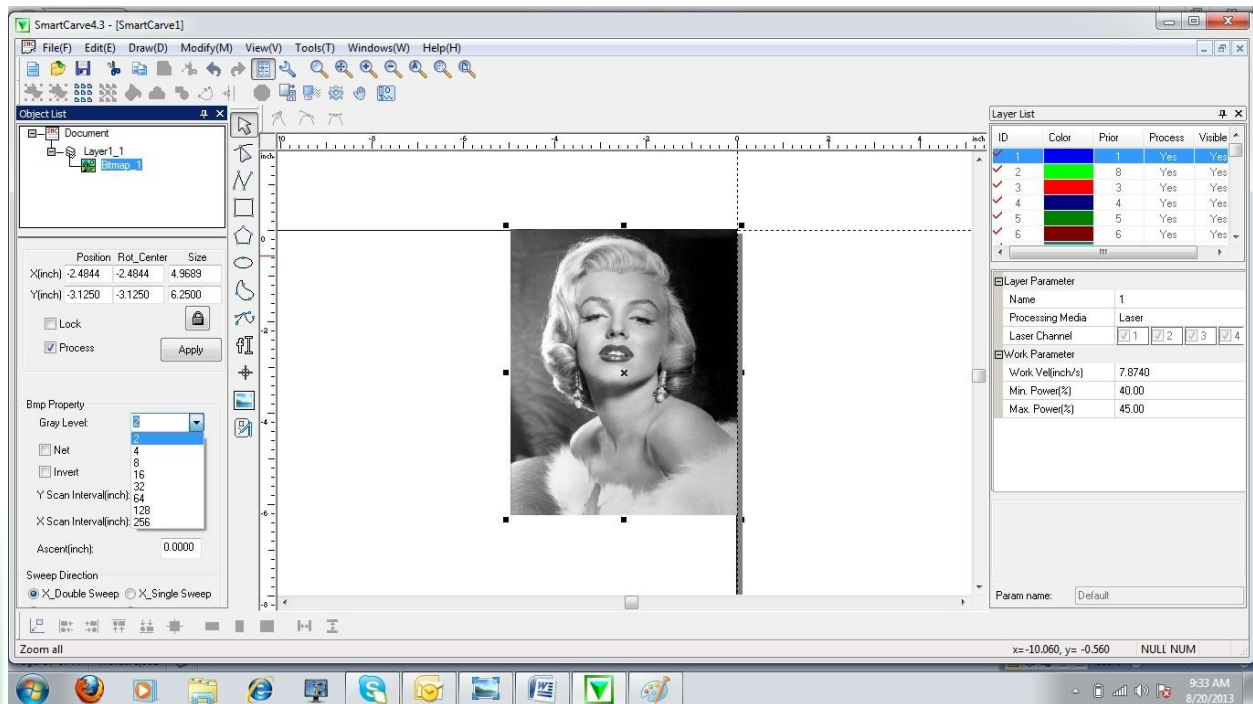


ENGRAVING PICTURES

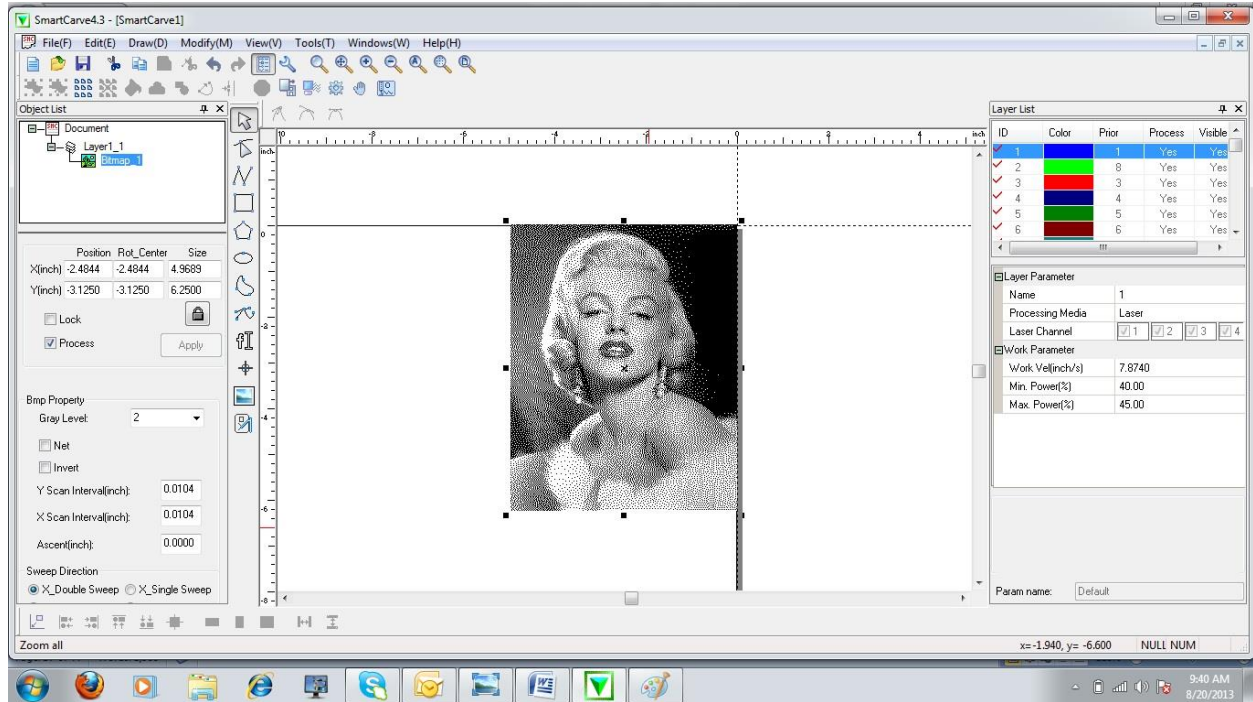
1. Select the picture to be engraved (Jpeg, Bmp and Gif only) by pressing Bitmap file.



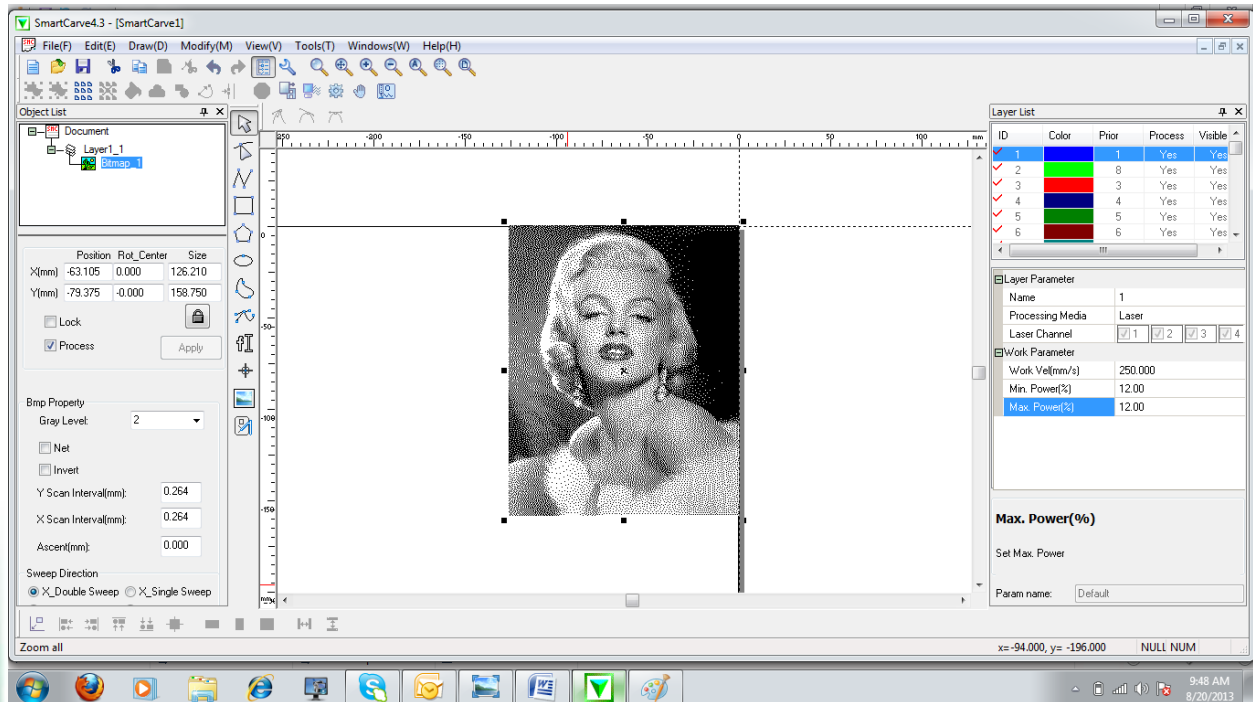
Once the picture has been selected set the gray scale to 2 and apply.



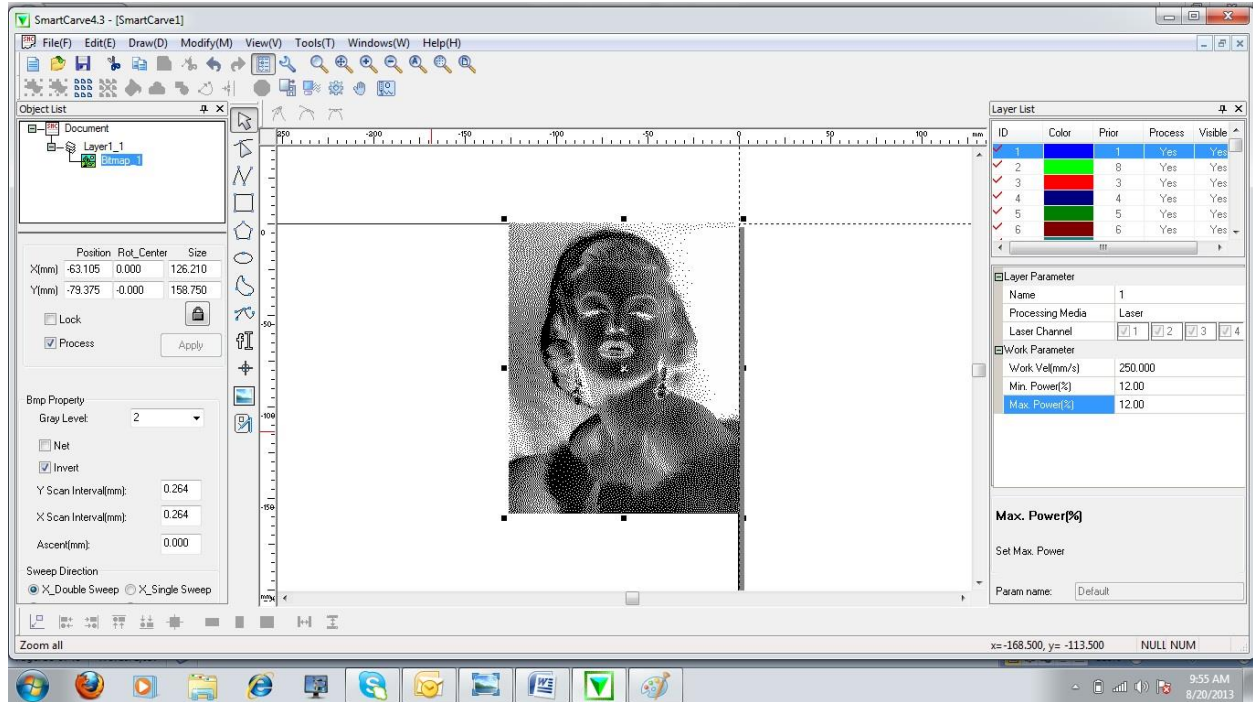
The display below shows the picture en semitones (dots). At this point the and X scan interval can be adjusted as desire to improve the image. This file can be engraved in wood and leather.



Set the parameters as recommended below and send the job to the laser machine. Carve out option.



To engrave the same file on acrylic select the invert option and apply it. The display will look like the picture below.



MAINTENANCE

Preventive maintenance has to be performed on a weekly basis. The rails and moving parts have to be lubricated as shown in the pictures below.



Maintenance and replacement of the mirrors.



Maintenance and replacement of the laser lens.



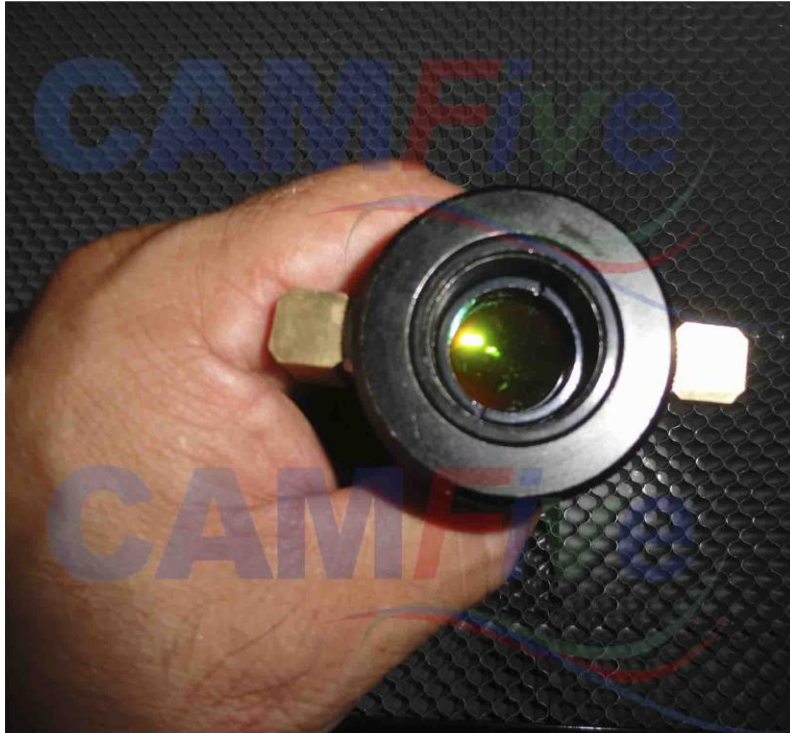
First, removed the air hose and the nozzle.



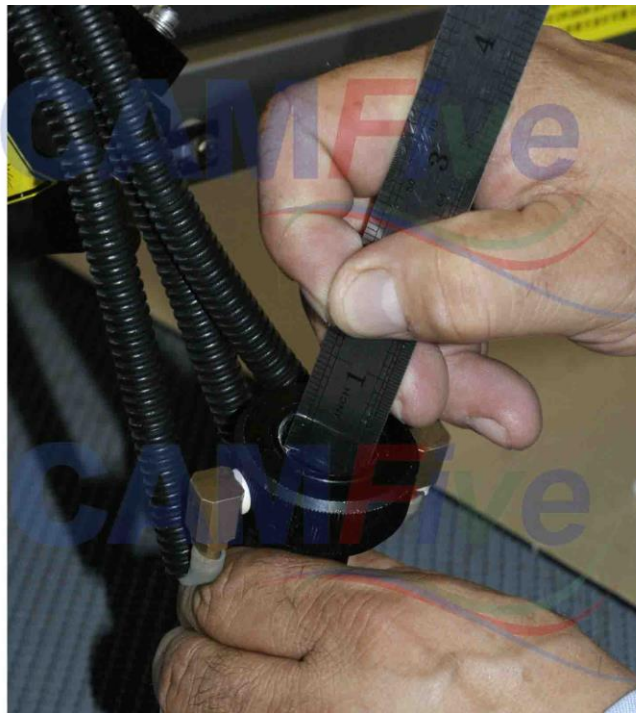


Loosen the adjustment to remove the laser pen.

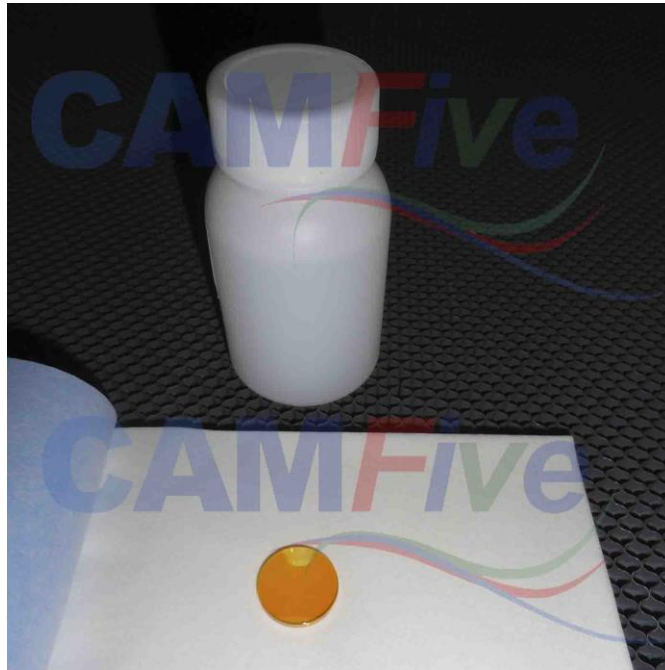




Using the ruler provided remove the nut and the o-ring that hold the lens in place.



Clean with tissue and solvent. Put the lens back in the same position with the flat side facing down the table. Reassemble the pen and put back in place.



Chiller maintenance consists in replacing the water when it starts getting dark. Disconnect the hoses from the main cabinet to get the water out of the tube. Use a bucket to avoid spilling water. Use the drain plug at the bottom of the chiller. Once is empty filling with distilled water.



Next step is to keep the filter clean. As shown is the picture below.



The air assist compressor does not require oiling. The only maintenance action is to clean the air filter on a by weekly basis.



TROUBLESHOOTING

LED indicators. There are three LEDs on the control card. The table below describes them in detail.

State of LED indicators

Operation	State of LED indicators
Change in signal from each sensor	LED 1 flashes
Laser beam error or water cooling failure	LED 2 is on
Normal operation	LED 3 flashes once every 1 second)

When copying/deleting a file or updating the system, the LED3 stops flashing. On this condition, you can press the key to check whether the system is down.

SOFTWARE AND COMUNICATIONS TROUBLESHOOTING

No.	Failure	Analysis	Solution
1	NO. 1.1 Card fails to connect a PC	1. Whether the USB data cable is connected properly.	Plug and re-insert the cable.
		2. Whether the communication driver is installed in the PC properly.	Install the driver.
		3. Whether the COM port is "disabled" on the computer.	Go to "Device Manager" of the PC and Select the required COM port, right-click it and select "Enable".
		4. Whether a correct COM port is connected with the SmartCarve4.2 software.	Select the right COM port.
		5. Breakdown or abnormal error occurs during	Re-open the COM port or re-open SmartCarve4.2. If the

		communication.	problem still exists, re-start the computer and machine.
2	LED3 indicator stops flashing	Check whether it is copying a file. If not, it indicates the system is down.	Re-start the machine.
3	Cannot detect the USB disk	1. Whether the disk is write protected.	Remove the write protection.
		2. Whether the file system is FAT.	Change the file system to FAT or FAT32. On the computer, select USB disk, right click the mouse, select “Format”, and select FAT or FAT32 in the drop box of “File System”.
		3. The USB Disk Type is not supported.	Use another type of USB disk.
4	File error	1. File copy fails. The file in the USB disk is damaged or the USB disk is not connected properly.	Change the file for processing, or re-insert the USB disk.
		2. No space. The internal flash memory or the USB disk has insufficient space.	Delete unnecessary files.
		3. Invalid file. It is not the *.oux file generated via SmartCarve4.2	Generate files for processing via SmartCarve4.2.
		4. Invalid update file.	Please use the update file provided by us. Or replace the update file in the USB disk.

	<p>5. Same Name Error. A file already exists in the USB disk with the same name.</p>	<p>Change the file to a different name or delete it.</p>
--	--	--

LASER MACHINE TROUBLESHOOTING

1. **Machine does not turn on:**
 - a. Is the machine properly connected to a 220 volts ac outlet?
 - b. Check output power on the voltage regulator.
 - c. Double check the turn on sequence.
2. **Machine is on but chiller and air pump are not:**
 - a. Check the power-strip-on/off switch.
3. **Machine goes on "Pause" when a job is sent from the SC software:**
 - a. Verify that the chiller is pumping water. LED 57 on the interface board should be "ON" when working properly. If "OFF" Watch the machine display at the right bottom corner. "COOL" means there is a problem with the water flow. check the chiller:
 - i. Is there enough water on chiller to runs through the system?
 - ii. Check if water chiller displays "SYSTEM RUNNING" if it is on the "STAND BY" mode press and hold the power button for few seconds until it starts.
 - iii. The hoses could be misplaced, water coming out of the outlet port of the chiller must go to in port of the machine and water coming out port of machine must go to inlet port of the chiller.
 - iv. If your chiller is equipped with a shut-off valve make sure it is open.
 - v. Make sure the hoses are not clogged or being pressed obstructing the water flow.
 - b. Make sure that the safety switches on the back doors and front doors are activated (pressed). LED 115 on the interface board should be "ON" for normal operation. For safety reasons, machine will not work with open doors.
 - c. Press the start/pause in the control panel to release it.
4. **Machine "beeps" and does not do the job:**
 - a. Your image is located partially outside of working area. Reset point of Origin.
 - b. Make sure the selected layer is set to "YES" under process.
5. **Machine moves but does not cut:**
 - a. Make sure the laser switch is in the "ON" position. The relay in the lower right corner of the electronics panel should be "ON".
 - b. Check the potentiometer by the control panel and make sure it is all the way to the max.
 - c. Check the Amp gauge for power supply output current. "LOW" or "NO" output current calls for a defective power supply. Replace.

- d. Send a job at 90% power. Output current reading has to be around 26-28 mA on the gauge. If so, the laser tube is bad and it needs to be replaced.
- 6. Machine marks but does not cut:**
 - a. Check parameters. Might need to increase the power and/or decrease the speed on SmartCarve software.
 - b. Follow step 5.
- 7. Machine cuts somewhere else but not where I place the laser head.**
 - a. Press "Origin" button right after you have placed the laser head where you want to start the cut.
- 8. Machine does not cut all my logo: e.g. it cuts only 1,2 or 3 lines instead of a whole square:**
 - a. Point of Origin is not set properly. Out of work area. Correct.
 - b. Double check the colors and layers and make sure they are properly set to cut.
- 9. Message: "Error: The version of USB port driver is not compatible" or "Open serial port fault" on the PC screen.**
 - a. Unplug the USB cable from machine wait few second and plug it back in, If this does not correct the problem turn machine completely off and after few seconds turn it back on.
 - b. Reinstall the USB drivers: execute this file ...driver\controller1&1.1\CDM20814_Setup.exe, you should have a black window pop up showing you it is installing the drivers and then it will disappear, make sure you run it as administrator if no window pops up.
- 10. Message: "Machine is working, send data fail" on the PC screen.**
 - a. Check the display of the machine if it says "Pause" in the first line means that the machine didn't finished the previous job, check troubleshoot point 3 to see which apply to this case.

FAQ LASER MACHINE

- **What is the turn on sequence?** first, turn “ON” voltage regulator (which turns on chiller and air compressor). Then, main switch on the machine, turn on key by the control panel, then, push the laser button.
- **What is the turn “OFF” sequence?** it will be exactly the opposite to the turn on sequence.
- **What temperature should the chiller be at?** between 20 °C and 25 °C depending on the room temperature.
- **How often should I change the water in the chiller?** it is recommended at least every 4 to 2 months or more often, depending on how much do you use the machine, if water start to turn dark change it.
- **What is the air pump for?** Mainly 3 reasons preventing fumes to get into the lens chamber, decrease the risk of ignite a fire and clean the area to be engraved.
- **What is the air valve for?** Depending on the material to work you may need to increase or reduce the air flow but do not shut completely off because it might ignite fire.
- **What are the 3 hoses on the laser head (laser pen) for?** one is for the air assist, the other 2 are for the water cooling system, cold water comes from chiller through one of them and goes back to chiller through the other one.
- **How do I clean up the lens?** remove the laser head from rail, unscrew the nose of the laser head then unscrew the securing ring to release the lens, once you have taken out clean it up with the solution and tissues provided with your equipment, put them back the opposite order you got it out.
- **What is the right way to put the lens?** when the laser head is ready to work the flat side of the lens must be facing down.
- **What is the “origin” button for?** It creates a reference point at the machine where all distances and measurements will be measured from.
- **What file format does software accept?** You can use BMP, JPEG and GIF for picture images and for vectors you can use AI, DST, DXF, PLT, CUT, DSB... among many more.
- **What software can I use to create or modify my existing files?** our software is highly competitive with all major design and retouching software on the market like ADOBE PHOTOSHOP, ILLUSTRATOR, COREL DRAW, AUTOCAD and more which allows you to keep using your favorite software to work your files.
- **How often does machine require maintenance and regular cleaning?** : basically it depends on the amount of work you put on the machine, **general cleaning** consist on check the lens and mirrors and clean them up if needed, also taking the honey comb out and run a vacuum for small particles that may have fallen from cutting. **General maintenance** consist on replace water from chiller, cleaning the chiller and air pump

filters and checking up calibration of the tube, to give you an idea how often you need to do this here are helpful tips:

- If you run the machine straight for 8 hours a day. Do general cleaning once every day and vacuum can be done once a week.
- If you run the machine 2 to 3 hour a day 5 days a week do general cleaning once every 2 weeks

Do this for at least the first 2 months and after you can decide how often you need to do it according to the amount of work on the machine.

General maintenance must be performed at least every 2 to 3 months or before if you notice the water on the chiller is getting dark, also make sure to add more water to chiller if needed, water will vaporize rapidly specially in hot room temperature.